



## Oakley Close, TW7

£299,950

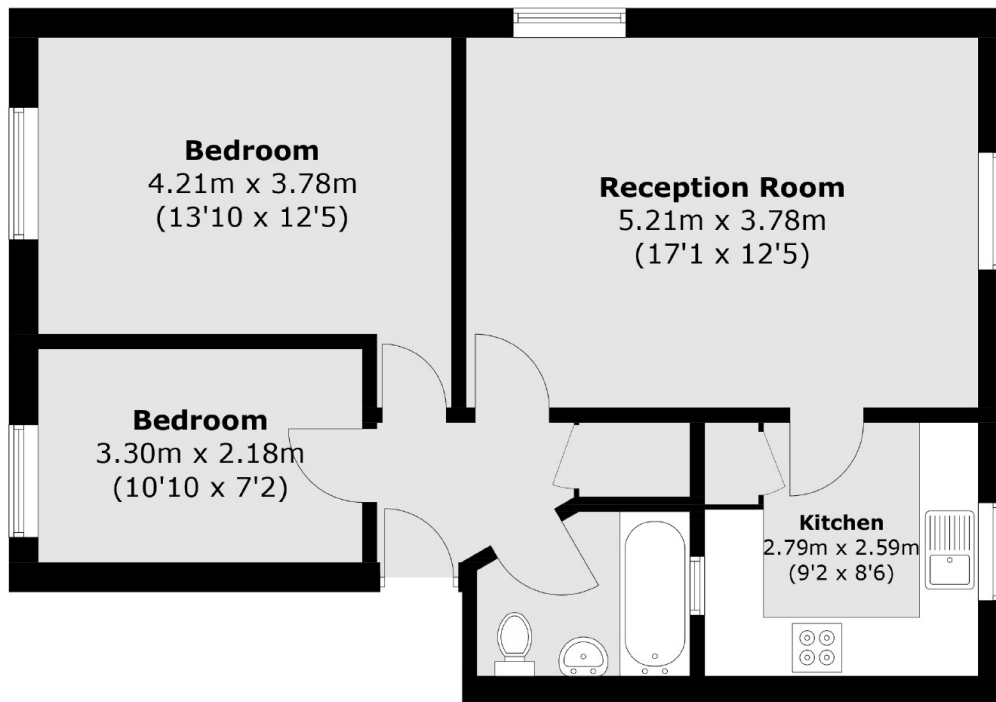
We are delighted to bring to the market a large two double bedroom first floor apartment located in a quiet and well maintained private estate. Benefits include communal gardens, long lease, low service charge and ample permit parking.

Oakley Close is located in a quiet residential area and sought after location in Isleworth just off Thornbury Road. There are a vast array of local shops, restaurants, parks, schools and colleges close by as well as easy access to the A4 into central London. Osterley Tube Station is a short walk away providing quick access to Heathrow Airport and Central London.

### Features

- First Floor Apartment
- Two Double Bedrooms
- Seperate Kitchen
- Long Lease - Approx. 951 Years
- Low Service Charge
- Communal Gardens

# Oakley Close, Isleworth, TW7



Total area (approx.): 57.3 sq. m (616.8 sq. ft)