



## Redesdale Gardens, TW7

£435,000

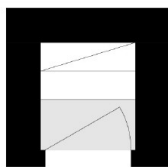
An immaculately presented, first floor maisonette, which has been tastefully modernised to a high standard by the current owners, set within the popular Duke Of Northumberland Estate. The property offers two double bedrooms, a spacious living room, a modern fitted kitchen with integrated appliances and a family bathroom. Further benefits include off street parking, loft space, a large private rear garden, double glazing and gas central heating.

Redesdale Gardens is a popular location situated close to both Syon Lane train station and Osterley station (Piccadilly Line). There are a number of excellent local parks and amenities.

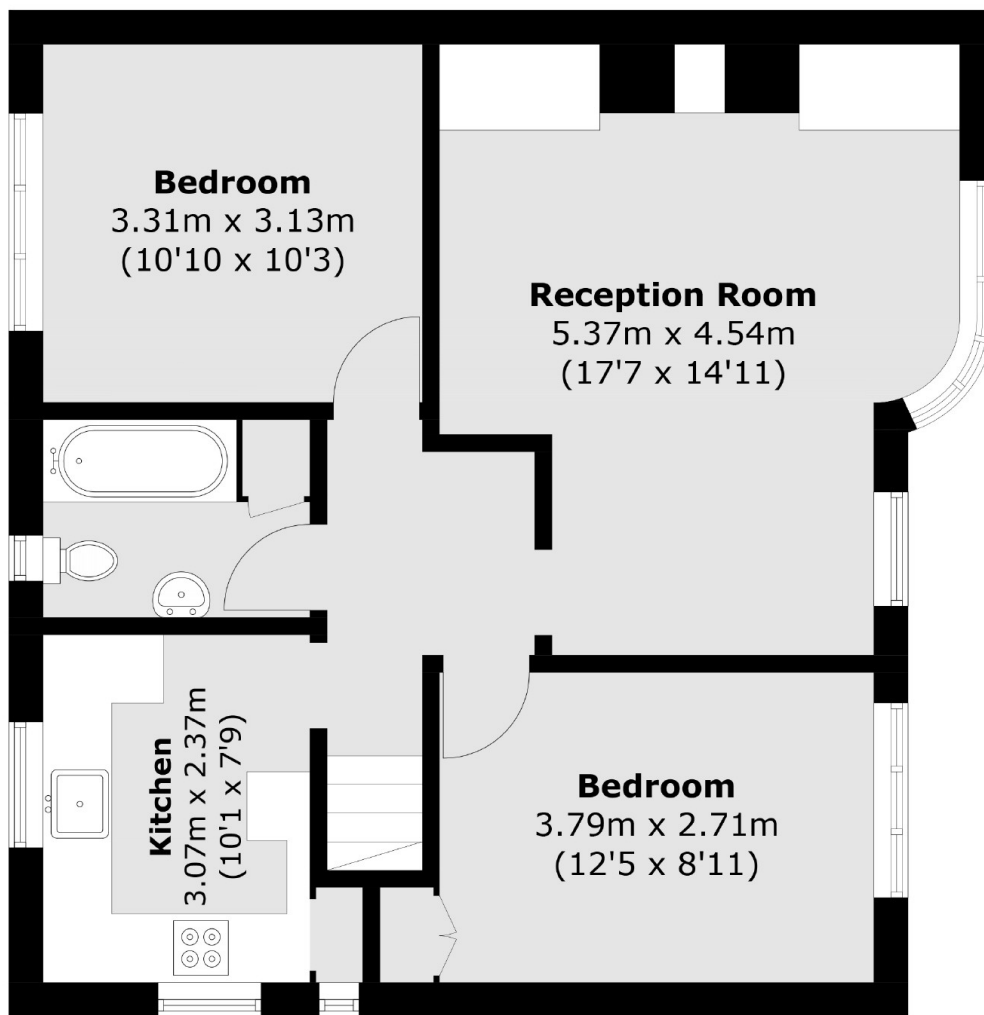
### Features

- First Floor Maisonette
- Two Double Bedrooms
- Share of Freehold / Long Lease
- Large Private Garden
- Off Street Parking / Driveway
- Immaculate Condition

# Redesdale Gardens, Isleworth, TW7



## Ground Floor



## First Floor

Total area (approx.): 62.5 sq. m (672.7 sq. ft)