



Wheatlands, TW5

£579,950

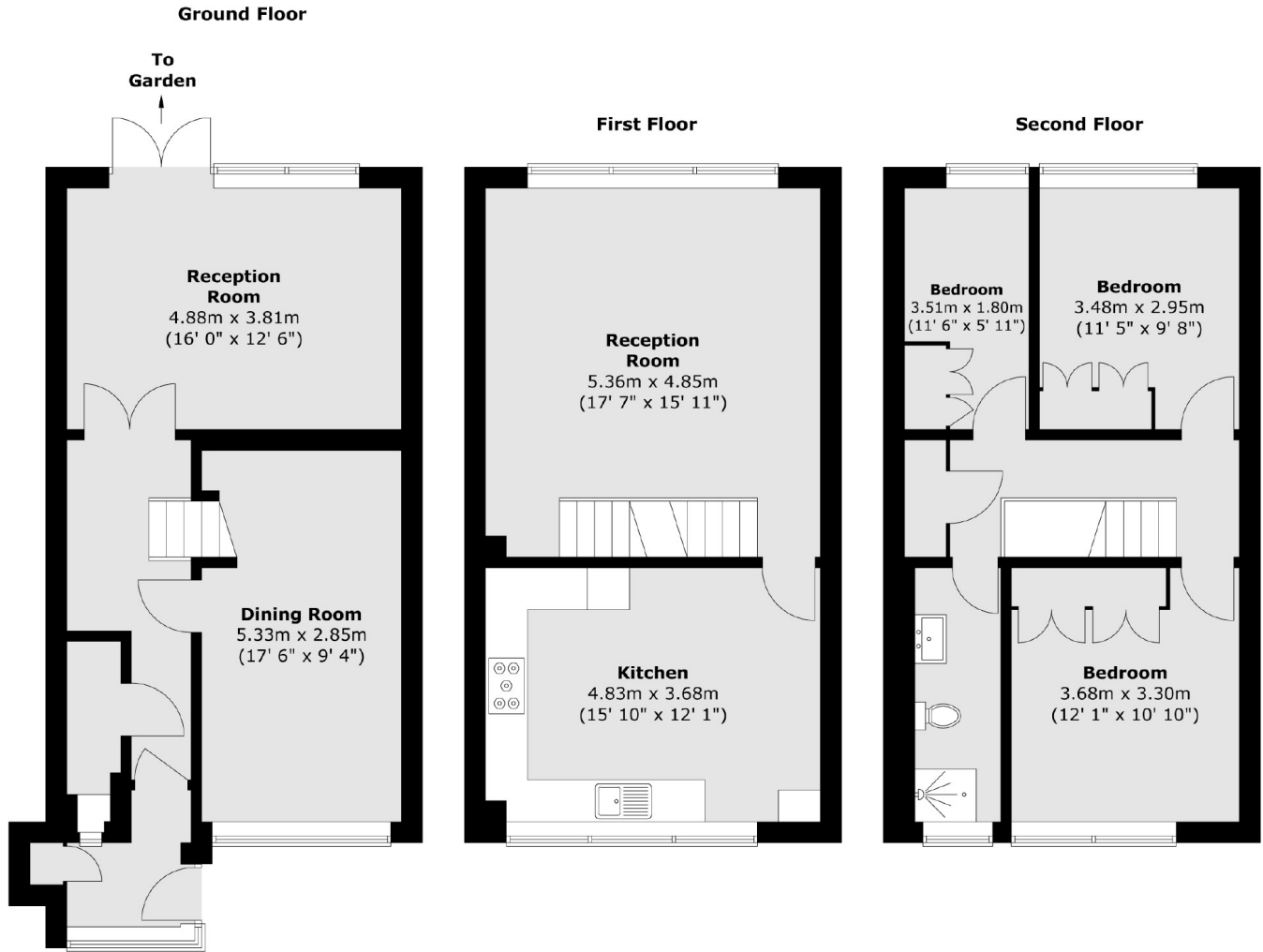
A beautifully presented three / four bedroom family home located in a quiet cul-de-sac with great transport links and in the catchment area for good schools. Arranged over three floors and offering more than 1,400 square feet of generous living space, this delightful family home has recently been renovated to a high standard. The property further benefits from off street parking for multiple cars, garage and large private garden.

Wheatlands is a quiet residential location and has great links via car to and from Central London and Osterley tube station is a walk away.

Features

Three/Four Bedroom House
Garage & Off Street Parking
Large Private Garden
Recently Renovated
Over 1,400 sq ft
Great Condition

Wheatlands, Hounslow, TW5



Total area (approx.) : 137.2 sq. m (1477 sq. ft)