



Estridge Close, TW3

£275,000

We are delighted to bring to the market this delightful two bedroom split level apartment. Spanning more than 800 square feet, this property further benefits from a separate kitchen and includes ample parking

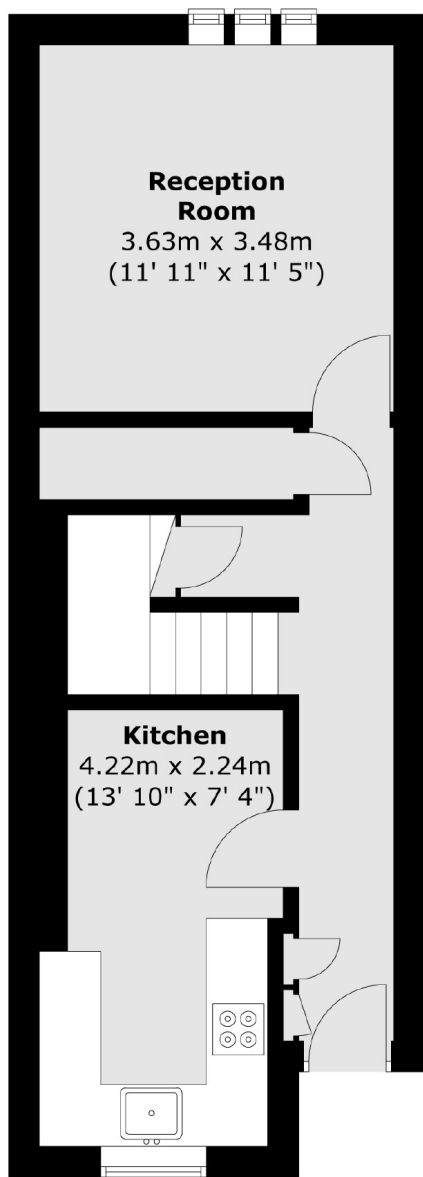
Estridge Close is ideally located with Hounslow high street a short walk away offering a variety of shops and restaurants. Hounslow Central Tube station and Hounslow Train Station both within easy access providing links to inner London and Heathrow Airport.

Features

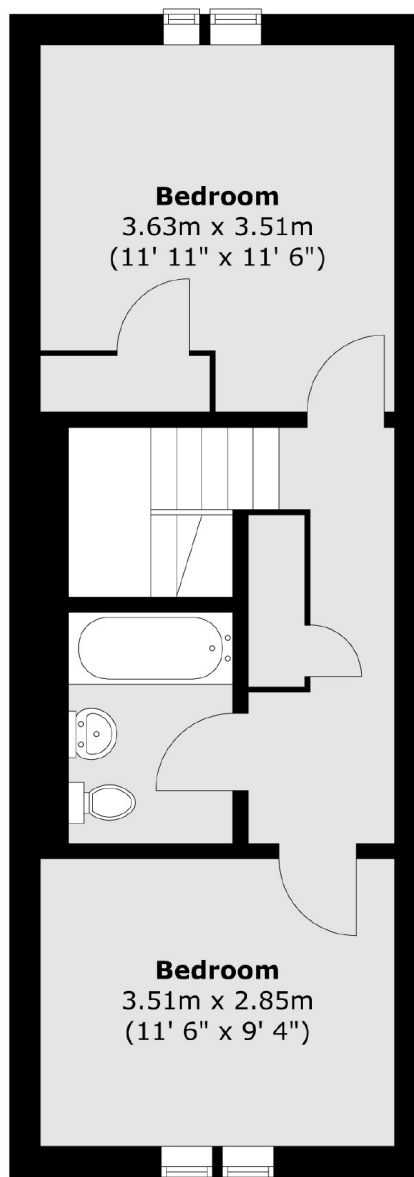
- Split Level
- Parking
- Over 800 Square Feet
- Two Double Bedrooms
- Excellent Location
- Lease 72 Years

Estridge Close, Hounslow, TW3

Second Floor



Third Floor



Total area (approx.) : 75.3 sq. m (810 sq. ft)