



Woodlands Grove, TW7

£999,950

Offered to the market with no onward chain, we are delighted to bring to the market this rare opportunity to purchase an impressive detached Victorian house on a sought after road in Isleworth. Offering almost 1,800 square feet of living space, this unique property is currently configured as three apartments making it a great investment purchase or substantial family home for those looking to add their own stamp and remodel. Further benefits include generous room sizes, large private garden and off street parking.

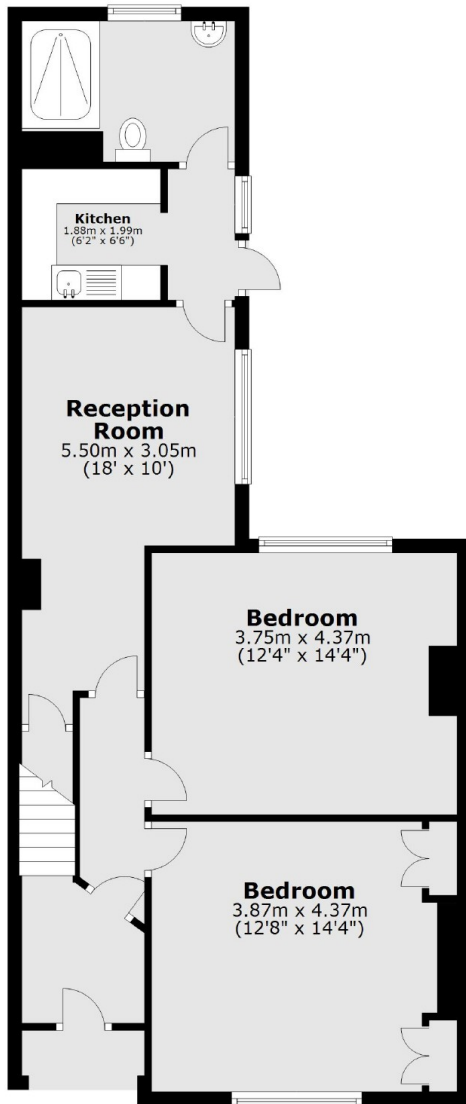
Superbly positioned in the popular and quiet residential area of Woodlands, the property is a short walking distance to Isleworth train station, excellent local schools and parks. There is easy access to neighbouring areas of Richmond, Twickenham and Kew.

Features

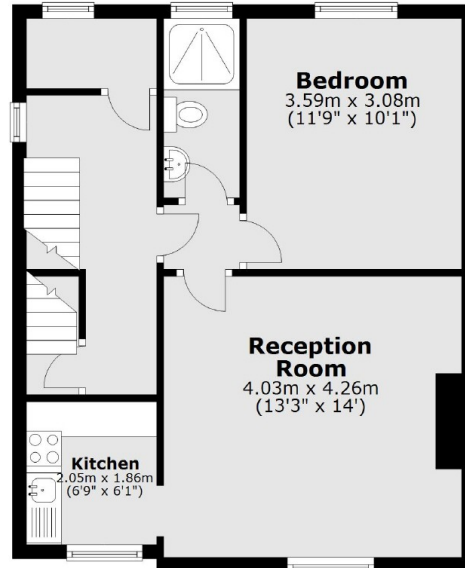
- Detached Victorian
- Four/Five Bedrooms
- Arranged as Three Apartments
- Off-Street Parking
- No Chain
- Large Garden

Woodlands Grove, Isleworth, TW7

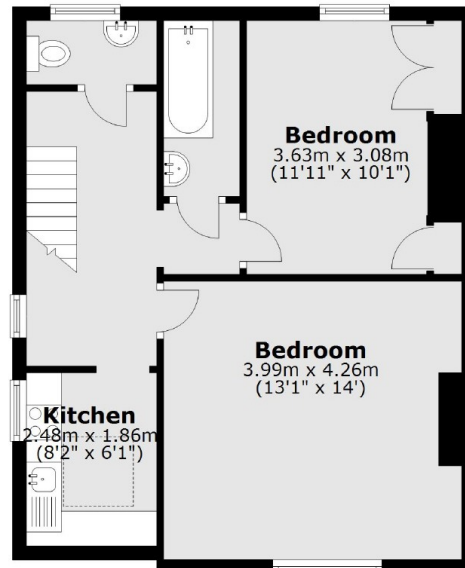
Ground Floor



First Floor



Second Floor



Total area: approx. 166.3 sq. metres (1790.1 sq. feet)