



Whitton Road, TW3

£549,950

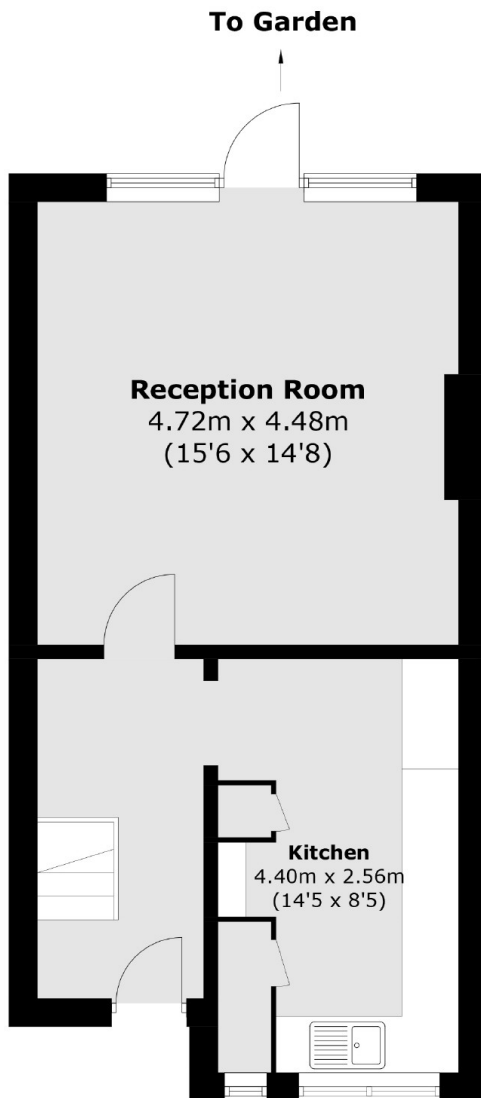
We are delighted to bring to the market this three bedroom end-of-terrace family home. The property benefits from a large private rear garden, generous front garden and off street parking. There is further scope to extend (STPP).

Superbly positioned between Whitton and Hounslow Mainline station, parks and schools. Whitton and Hounslow high street are within a short walking distance from a vast array of shops and restaurants.

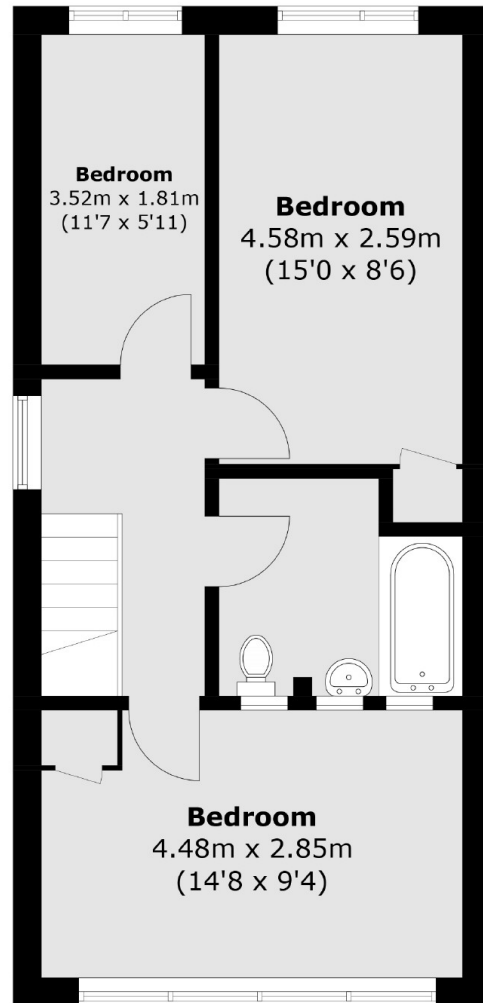
Features

- Three Bedroom House
- Large Front & Rear Garden
- Separate Kitchen
- Scope to Extend (STPP)
- Off-Street Parking
- Whitton Borders

Whitton Road, Hounslow, TW3



Ground Floor



First Floor

Total area (approx.): 85.2 sq. m (917.1 sq. ft)