



The Vale, TW5

£2,700 Per calendar month

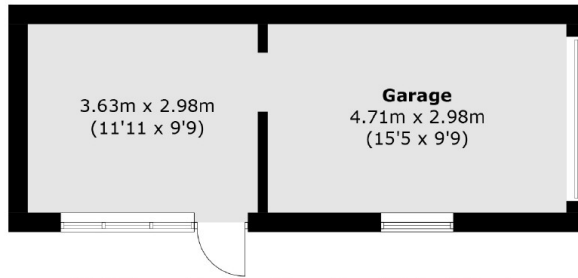
Newly decorated home with three double bedrooms, bright study room, double reception room, modern kitchen, bathroom plus two WC, driveway for two cars, and large private garden. Ideal family rental

This property is located around the corner from Berkeley Primary School, public transport links to London and Heathrow as well as the local shops and cafes.

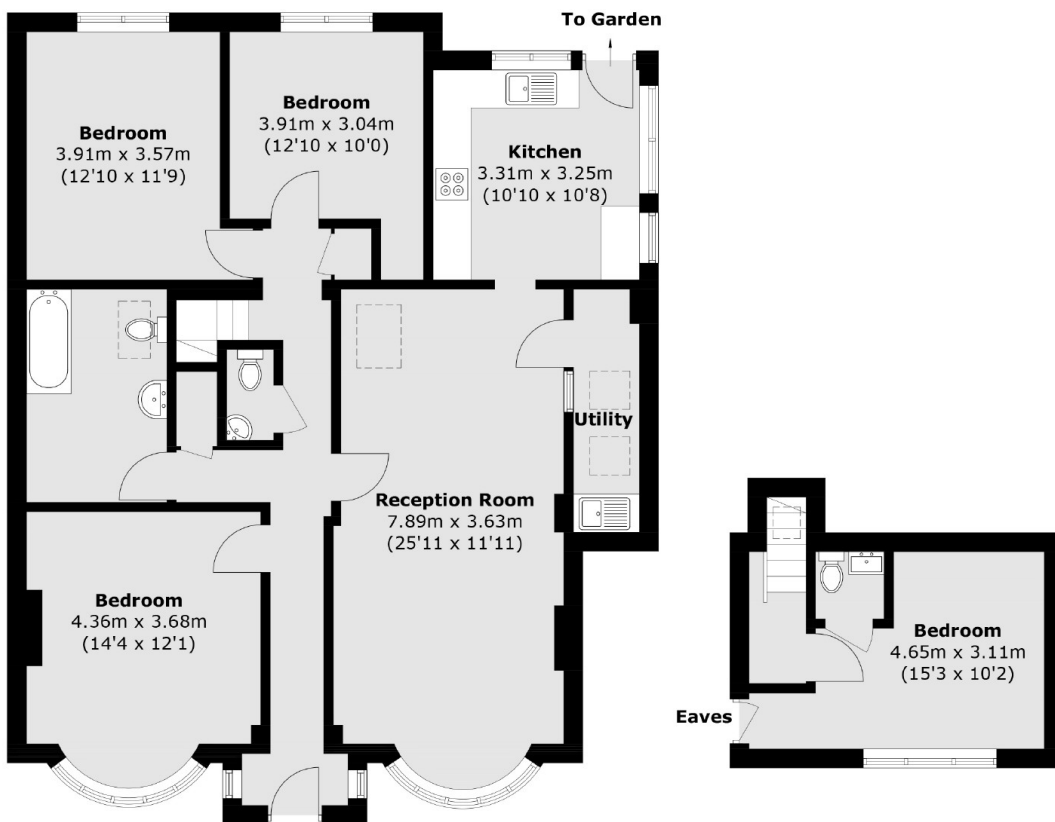
Features

- Newly Decorated
- Three Double Bedrooms
- Bright Study Room
- Double Reception Room
- Driveway
- Large Rear Garage
- Large Private Garden

The Vale, Hounslow, TW5



(Not Shown In Actual Location / Orientation)



Ground Floor

First Floor

Total area (approx.): 121.6 sq. m (1,308.9 sq. ft)
Garage (approx.): 25.4 sq. m (273.4 sq. ft)