



Conway Road, TW4

£499,950

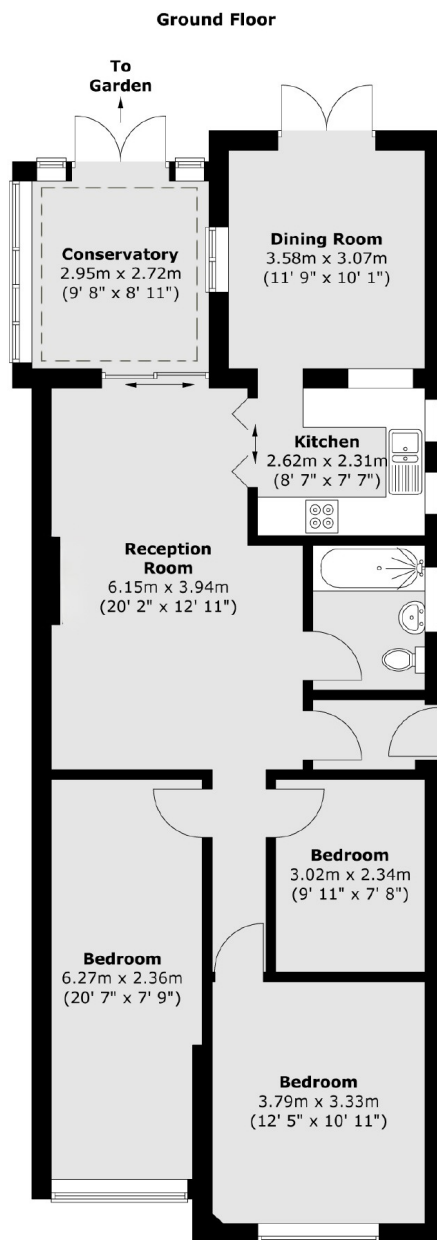
Offered to the market with no onward chain, we are delighted to bring to the market a rare opportunity to acquire this detached three bedroom bungalow. Positioned on a substantial plot of land with large front garden/driveway for multiple cars, and sizeable rear garden, this house offers scope to extend (STPP) and would make a great first time purchase or those looking for an exciting project home

Conway is a quiet residential road located a short distance to Whitton mainline station with regular services to London Waterloo. The high street is conveniently located offering a vast array of shops, bars and restaurants.

Features

- Detached Bungalow
- Substantial Plot
- Driveway for Multiple Cars
- Large Rear Garden
- Scope to Extend (STPP)
- No Chain

Conway Road, Hounslow, TW4



Total area (approx.) : 96.9 sq. m (1043 sq. ft)