



Oak Lane, TW7

£219,950

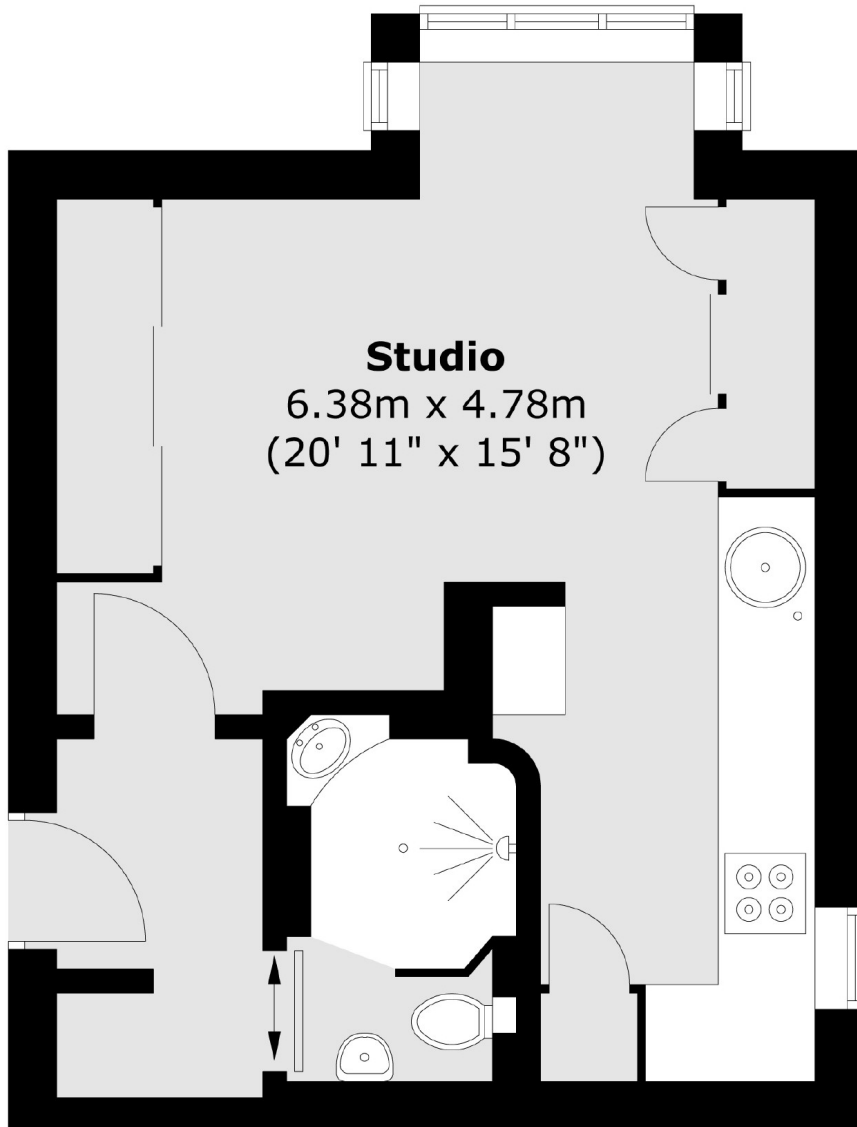
Offered to the market with no onward is this beautifully renovated ground floor studio apartment consisting of a large double bedroom/reception area and a modern open-plan kitchen with views onto a private garden. The property further benefits from private allocated parking to the rear.

Oak Lane is a quiet modern development tucked away off Worton Road. The local shops and amenities, and Isleworth Mainline Station are easy to reach via Riverside Walk.

Features

- Ground Floor Studio
- Recently Renovated
- Bedroom/Reception Area
- Private Rear Garden
- Allocated Off-Road Parking
- Ideal First Time Buy

Oak Lane, Isleworth, TW7



Total area (approx.) : 28.3 sq. m (305 sq. ft)