



## Beaumont Place, TW7

£325,000

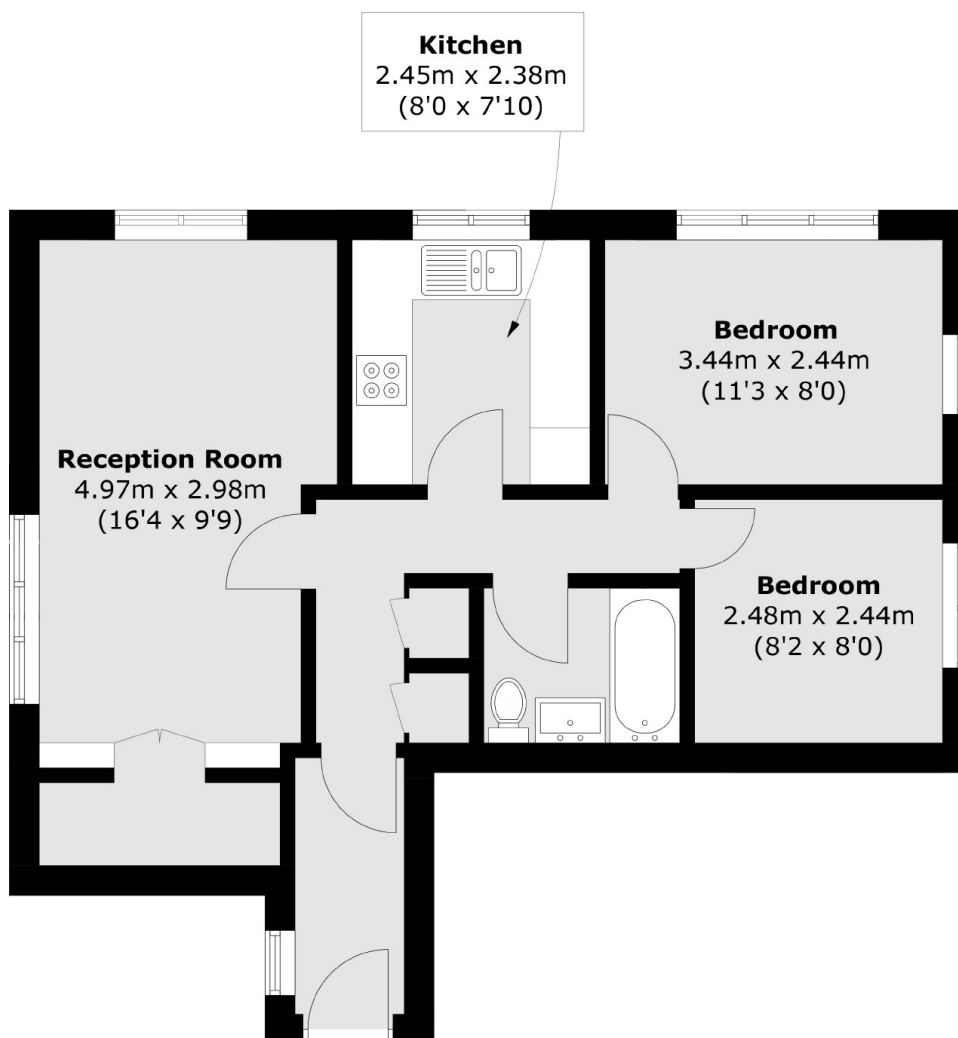
A charming two bedroom first floor apartment based on a highly sought after private development. The property benefits from allocated parking, ample loft storage and no onward chain.

Beaumont Place is ideally situated for access into Isleworth, Twickenham and Whitton, with Hounslow Tube (Picadilly Line) and Twickenham or Isleworth BR Mainline Stations within easy reach.

### Features

- Two Bedrooms
- First Floor Apartment
- Allocated Parking
- Private Development
- Communal Gardens
- No Onward Chain

# Beaumont Place, Isleworth, TW7



Total area (approx.): 51.8 sq. m (557.6 sq. ft)