



## Marbaix Gardens, TW7

£999,950

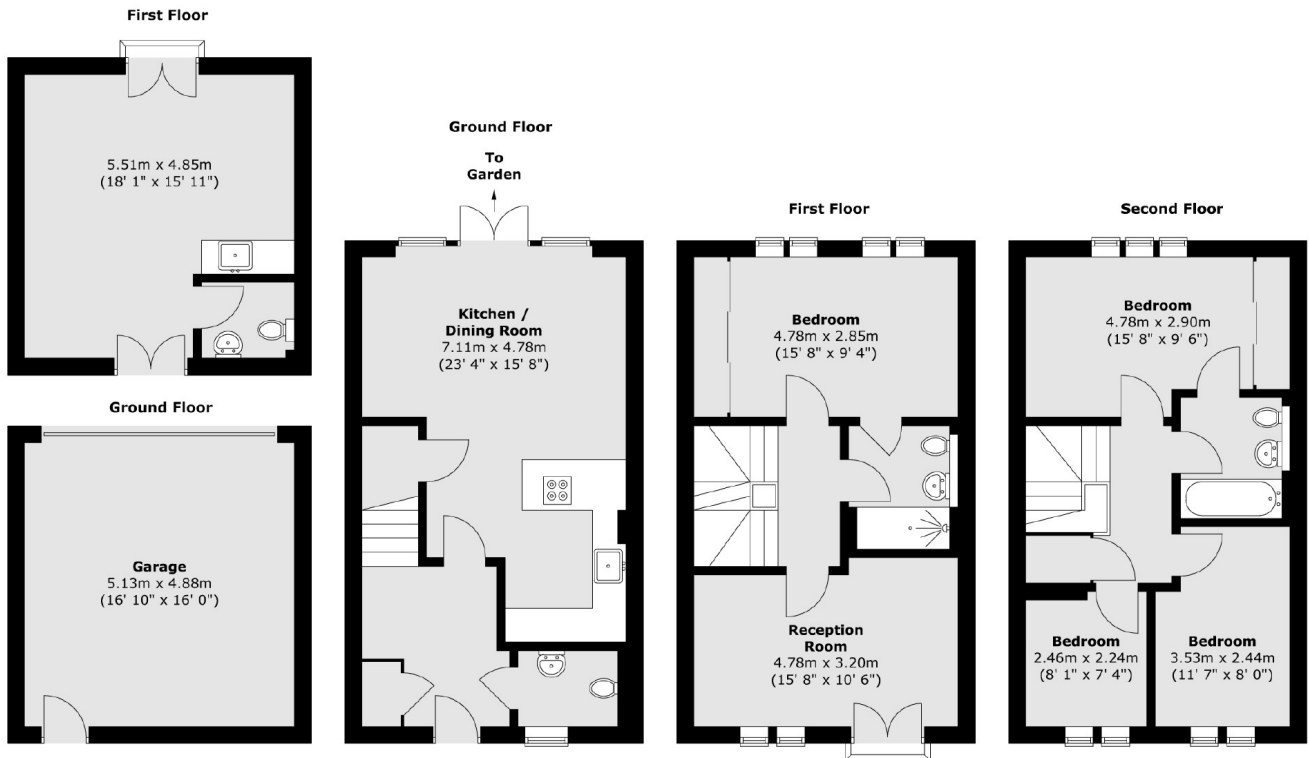
Offered to the market with no onward chain is this beautifully presented four/five bedroom, two bathroom, townhouse situated in the exclusive gated Marbaix Gardens development. Offering more than 1,850 square feet of living space, this property includes an additional/separate building containing a double garage and self-contained office/studio with WC and kitchenette area. Further benefits include a delightful reception room with balcony on the first floor offering stunning views of the beautiful & large landscaped communal gardens. There is an additional downstairs WC/Cloakroom, ideal when entertaining guests

Marbaix Gardens is a sought after gated development in Isleworth, located just off Thornbury Road. Situated close to Osterley tube station (Piccadilly line), National Trust's Osterley Park and excellent local schools. There are good road links within easy access, including the A4 which provides convenient access to the M4 motorway as well as Central London, and the neighbouring areas of Richmond, Twickenham and Chiswick.

### Features

- Four/Five Bedrooms
- Private Garden & Balcony
- Double Garage
- Separate Studio with WC
- Gated Development
- Immaculately Presented

# Marbaix Gardens, Isleworth, TW7



Total area (approx.) : 122.7 sq. m (1321 sq. ft)  
Total outbuilding area (approx.) : 50.7 sq. m (546 sq. ft)  
Total balcony area (approx.) : 0.6 sq. m (6 sq. ft)