



St. Johns Road, TW7

£310,000

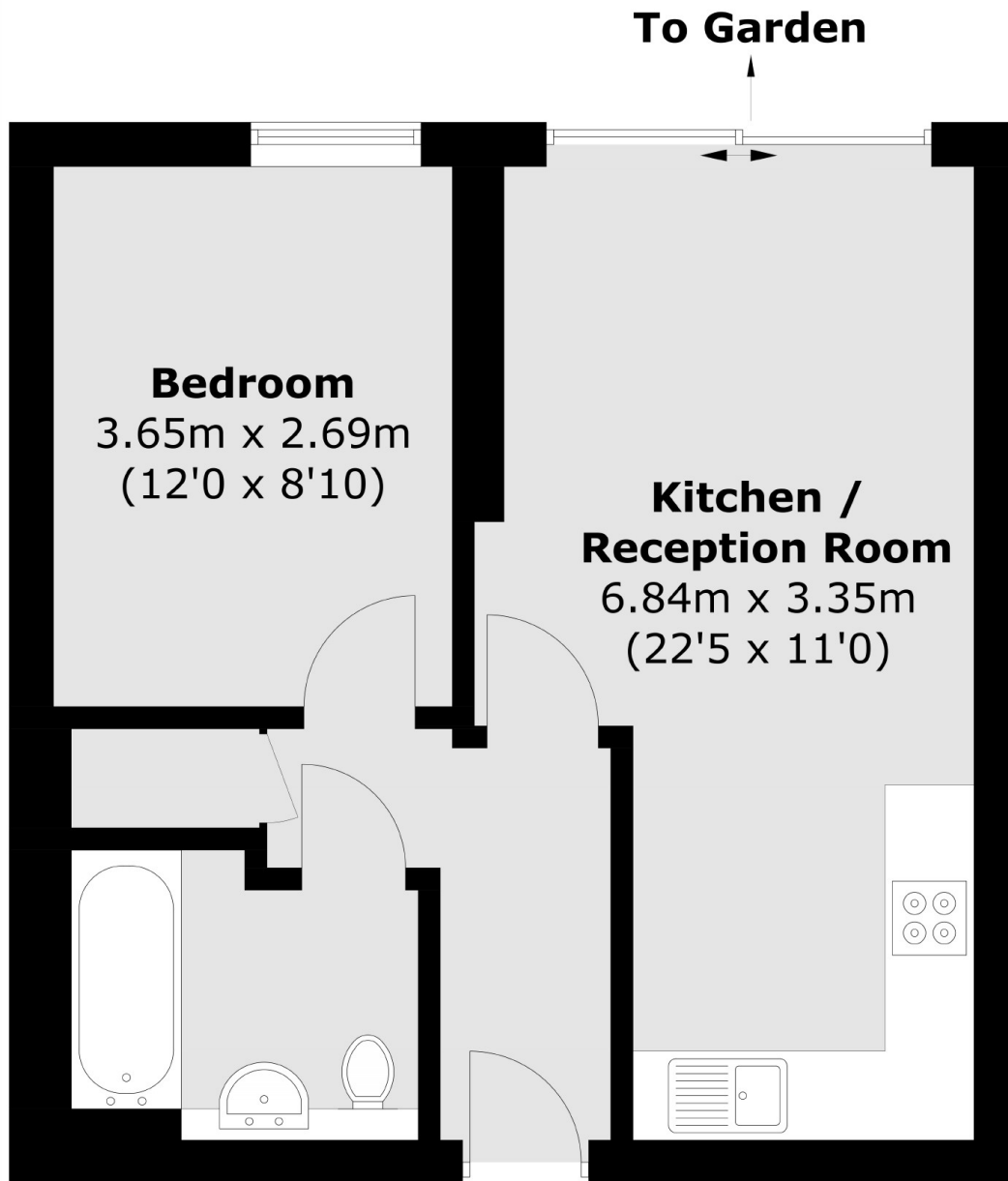
A beautifully presented ground floor one bedroom apartment ideal for first time buyers. This modern property benefits from allocated parking within a secure gated development, a long lease and private outdoor space.

Wotton House is superbly positioned in the heart of Isleworth close to Isleworth train station, local parks and amenities. St. Margarets and Richmond are a pleasant walk away or short busy journey.

Features

- One Bedroom
- Private Outdoor Space
- Allocated Parking
- Secure Gated Development
- Long Lease
- Excellent Location

**St. Johns Road,
Isleworth, TW7**



Total area (approx.): 41.0 sq. m (441.3 sq. ft)