



London Road, TW7

£365,000

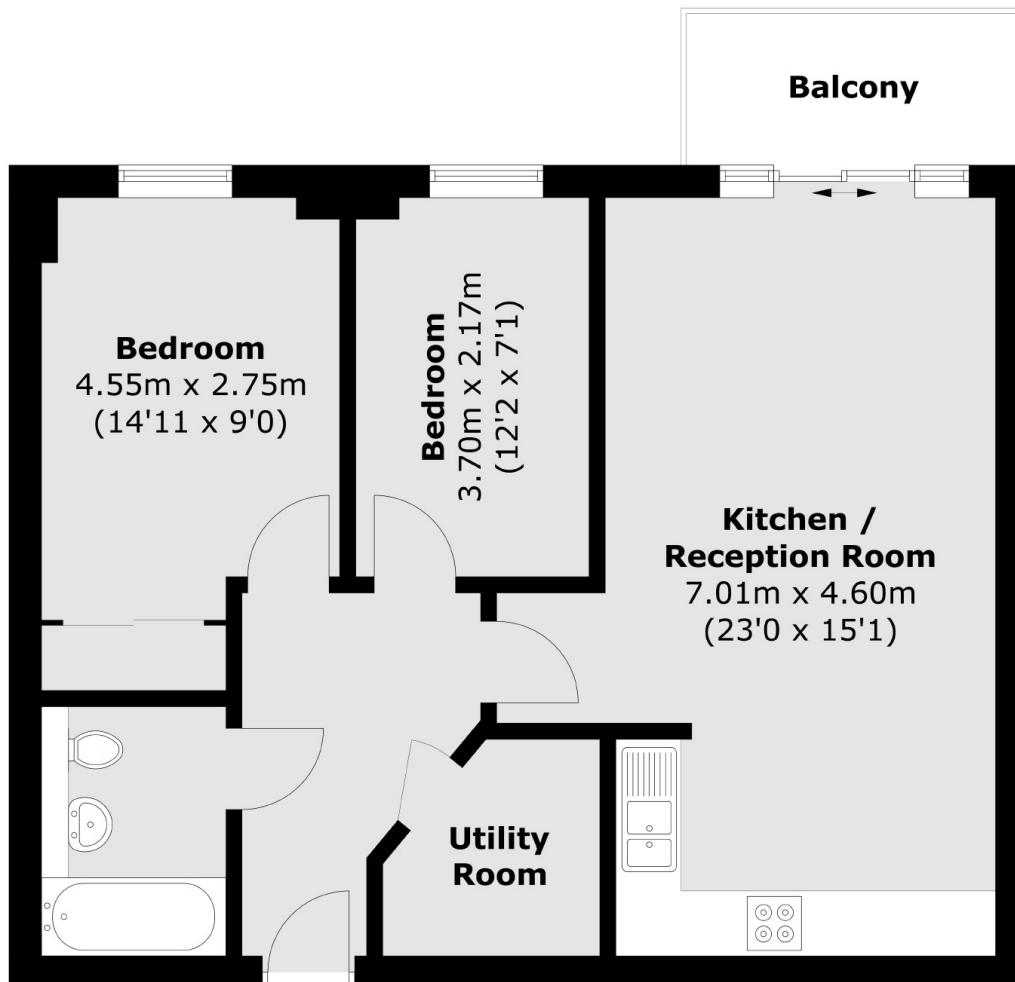
A beautifully presented two double bedroom apartment situated in a desirable development based on London Road. Benefits include allocated parking, a private balcony, lift service and a communal roof terrace with stunning views of the London Skyline.

Ideally situated close to excellent transport links including both Isleworth station and Hounslow East (Piccadilly line) station, as well as bus links to neighbouring areas. The property is also a short walk to an array of shops and restaurants.

Features

- Two Double Bedrooms
- Beautifully Presented
- Allocated Parking
- Private Balcony
- Communal Lift Service
- Private Roof Terrace

London Road, Isleworth, TW7



Third Floor

Total area (approx.): 61.9 sq. m (666.3 sq. ft)
Balcony: 4.3 sq. m (46.3 sq. ft)