



Marbaix Gardens, TW7

£4,500 Per calendar month

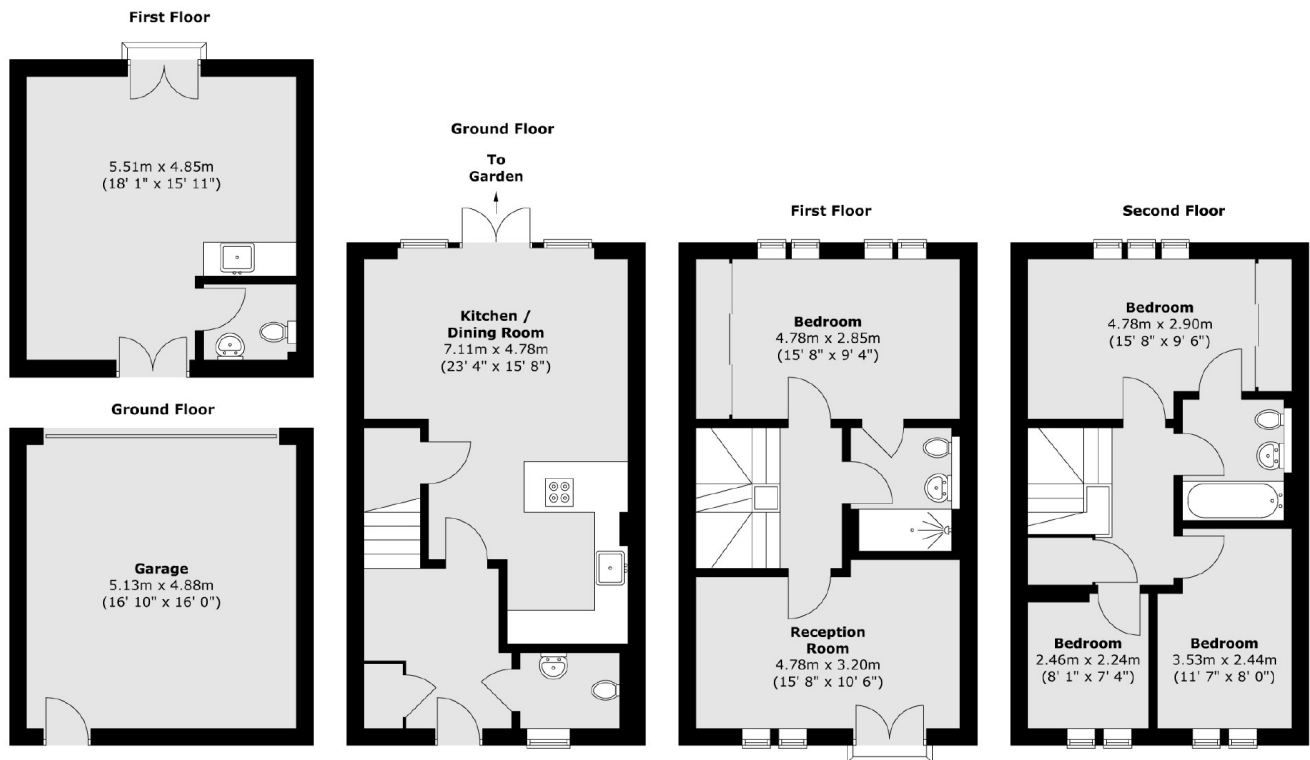
An stunning four double bedroom house in this very well maintained gated built development with private garden offering outdoor pizza oven, double garage, additional studio space, bright reception room and open plan kitchen diner. Ideal for a family.

Marbaix Gardens is situated in the heart of Isleworth, within with easy access to Osterley Tube Station (Piccadilly line), Isleworth BR Mainline Station and the A4 with its routes into London and Heathrow. Syon Park and the amenities of Isleworth, Osterley & St Margaret's are all within easy reach.

Features

- Four Bedrooms
- Studio Space
- Two Bathrooms
- Bright Reception with Balcony
- Large Kitchen Diner
- Double Garage

Marbaix Gardens, Isleworth, TW7



Total area (approx.) : 122.7 sq. m (1321 sq. ft)
 Total outbuilding area (approx.) : 50.7 sq. m (546 sq. ft)
 Total balcony area (approx.) : 0.6 sq. m (6 sq. ft)