



Frazer Nash Close, TW7

£2,200 Per calendar month

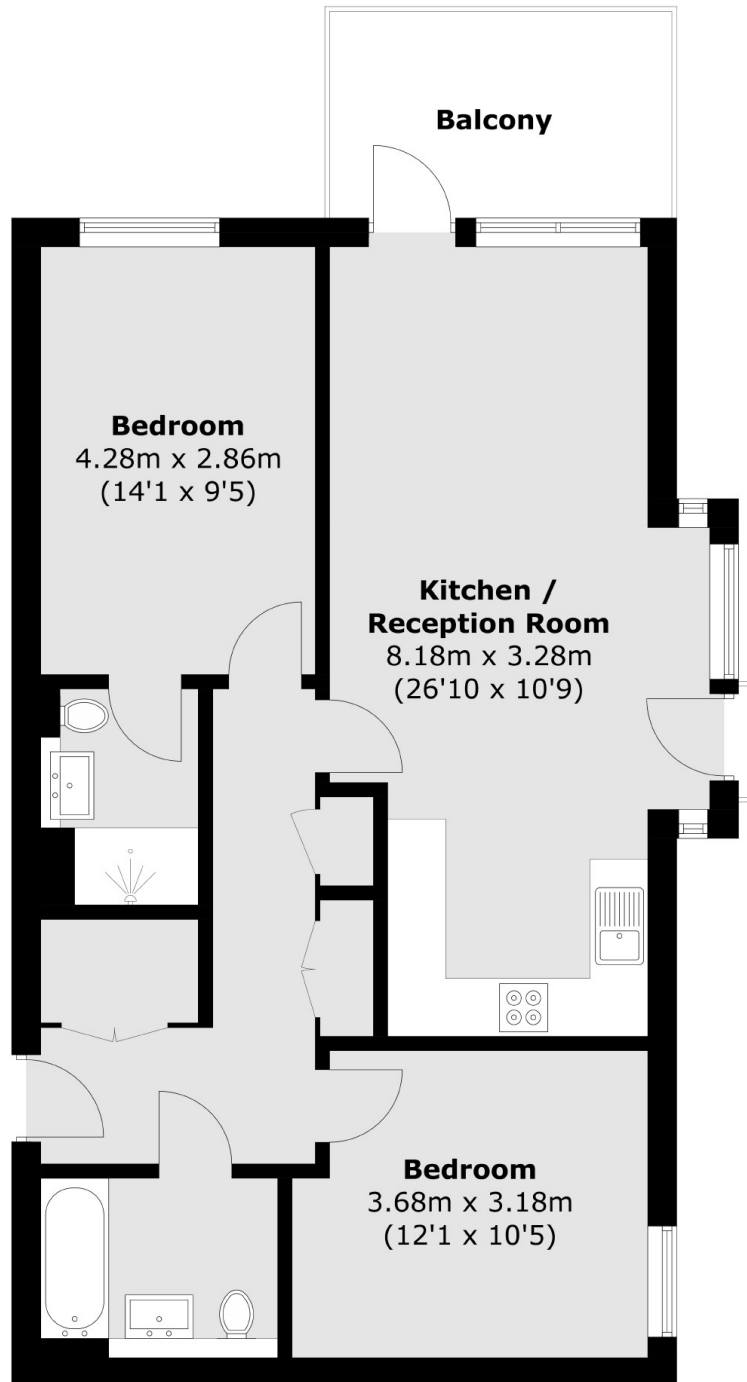
A fantastic two double bedroom apartment with two bathrooms, bright reception room, open plan kitchen, private balcony and with ample storage space. This property is around the corner from Isleworth Train Station.

This property is in the heart of Isleworth and is easy accessible to Isleworth BR mainline station as well as St. Johns Gardens is around the corner from the property.

Features

- New Build Development
- Two Double Bedrooms
- Two Bathrooms
- Bright Reception Room
- Open Plan Kitchen
- Ample Storage Space

Frazer Nash Close, Isleworth, TW7



Total area (approx.): 74.5 sq. m (801.9 sq. ft)
Balcony: 7.6 sq. m (81.8 sq. ft)

Dexters

Isleworth
568 London Road
Isleworth
TW7 4EP
Lettings
020 8560 1717

Energy Rating: B. We aim to make our particulars both accurate and reliable. However they are not guaranteed; nor do they form part of an offer or contract. If you require clarification on any points then please contact us, especially if you're traveling some distance to view. Please note that appliances and heating systems have not been tested and therefore no warranties can be given as to their good working order.

 **RICS** | Regulated
Estate Agent
and Letting Agent

dexters.co.uk