



## Malting Way, TW7

£342,500

Offered to the market with no onward chain is this spaciouly presented, light and bright first floor apartment. Consisting of two good size bedrooms, this property further benefits from allocated parking in this sought after development.

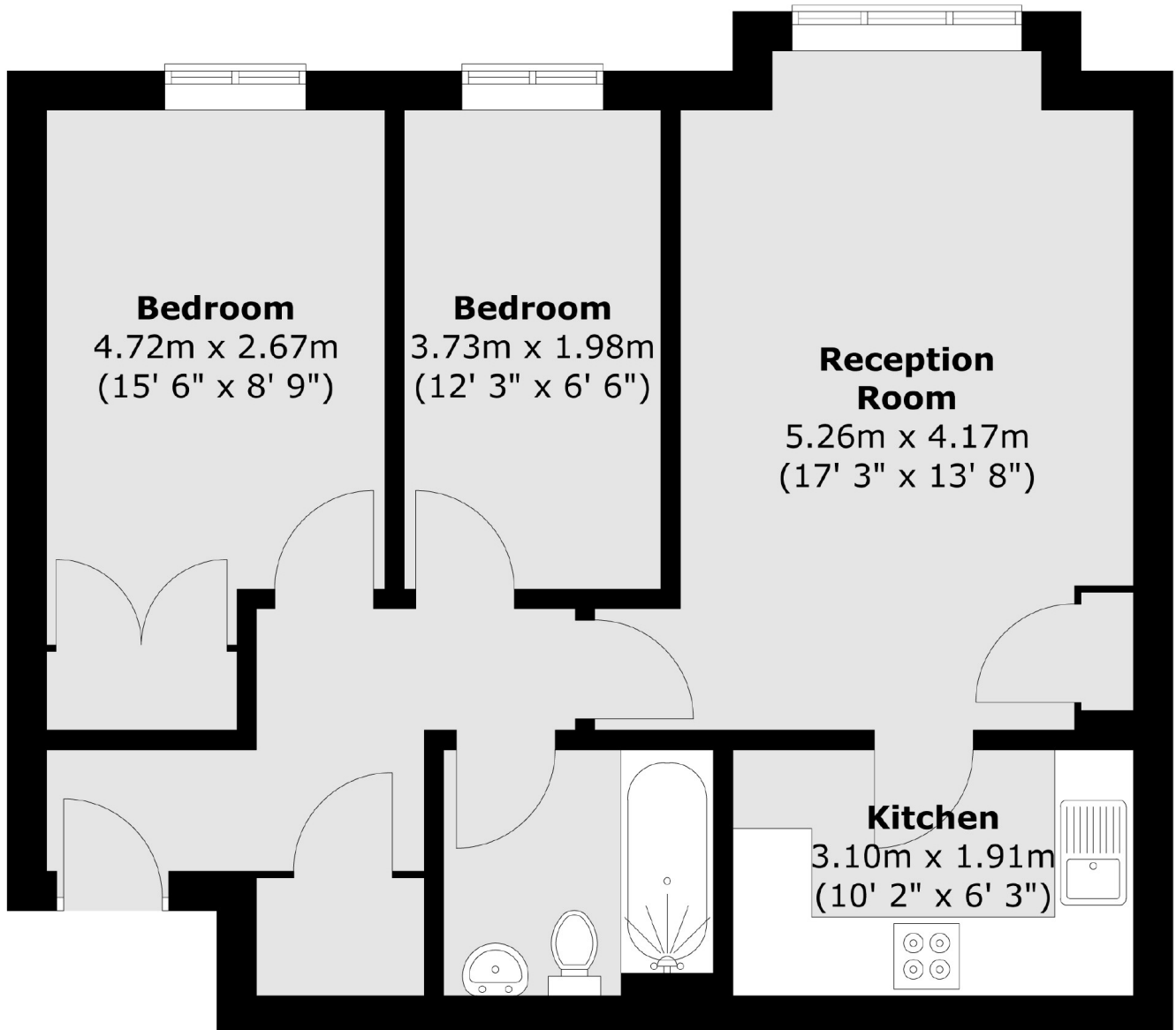
Located close to excellent local parks, schools and shops as well as easy access to Isleworth Mainline Station and neighbouring areas of St Margarets, Richmond and Twickenham.

### Features

- Two Bedrooms
- Allocated Parking
- Communal Gardens
- Close To Amenities
- Popular Development
- No Onward Chain

# Malting Way, Isleworth, TW7

## First Floor



Total area (approx.) : 57.2 sq. m (616 sq. ft)