



The Drive, TW3

£649,950

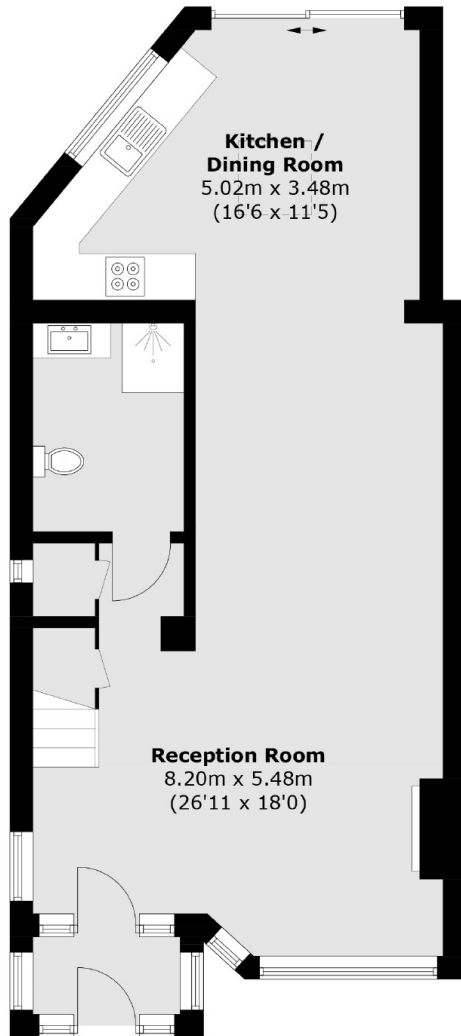
Offered to the market with no onward chain, is this delightful three bedroom, two bathroom, semi-detached family home. Benefits include off-street parking for multiple cars, large private rear garden. There is further scope to extend (STPP).

The Drive is ideally located with Hounslow East Station just around the corner. Osterley Park & Osterley Tube Station are also nearby.

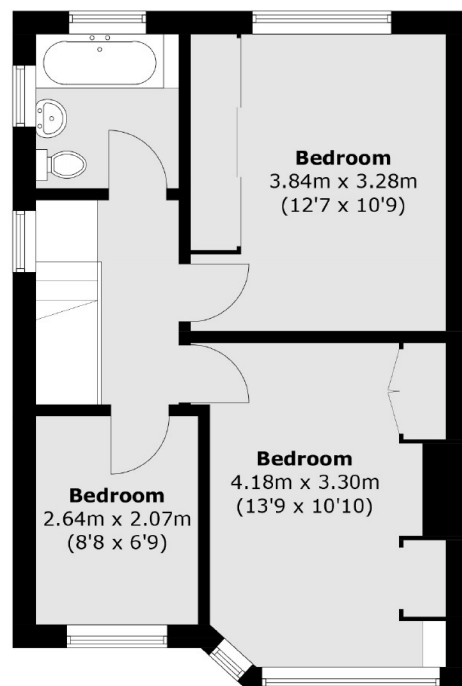
Features

- Semi-Detached House
- Three Bedroom
- Two Bathrooms
- Off-Street Parking
- Scope to Extend (STPP)
- No Chain

The Drive, Hounslow, TW3



Ground Floor



First Floor

Total area (approx.): 103.3 sq. m (1,111.9 sq. ft)