



Redesdale Gardens, TW7

£380,000

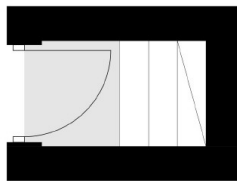
A spacious two double bedroom first floor maisonette set on the popular Duke Of Northumberland Estate. The property offers excellent room proportions, large private rear garden and exceptionally large loft space. Further benefits include a share of the freehold, long lease in excess of 900 years and no service charge.

Redesdale Gardens is a popular location situated close to both Syon Lane train station and Osterley station (Piccadilly Line). There are a number of excellent local parks and amenities.

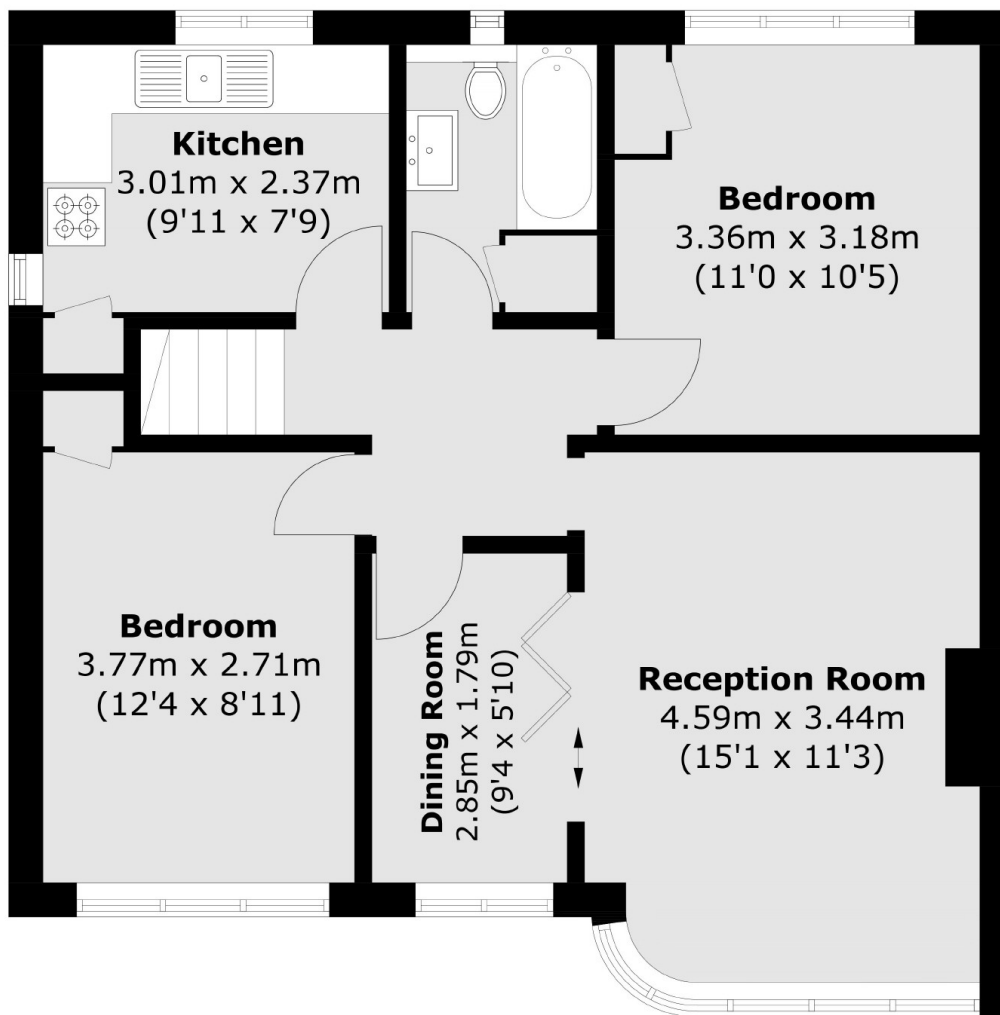
Features

- Two Double Bedrooms
- Share of Freehold / Long Lease
- First Floor Maisonette
- Private Entrance
- Private Rear Garden
- Large Loft Space

Redesdale Gardens, Isleworth, TW7



Ground Floor



First Floor

Total area (approx.): 63.5 sq. m (683.5 sq. ft)