



Marchside Close, TW5

£275,000

*** OFFERS IN EXCESS OF *** A bright and spacious two bedroom first floor apartment offered to the market with no onward chain. The property benefits from off street parking, ample storage and a long lease. Ideal for both first time buyers and investors.

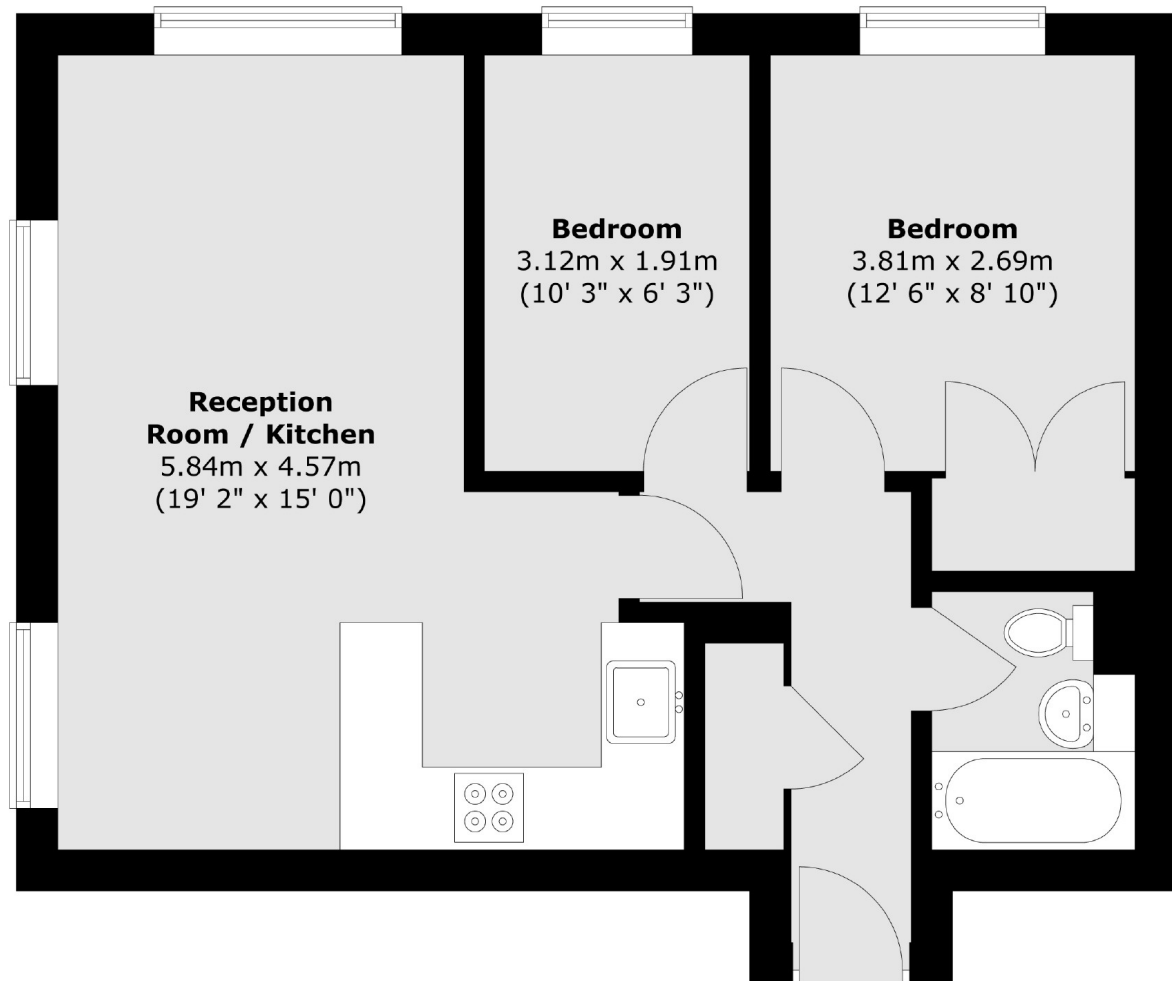
The property is ideally situated close to local amenities, transport links and parks. There is easy access to the A4/M4 in and out of London, as well as neighbouring areas on Isleworth, Hounslow and Twickenham.

Features

- First Floor
- Two Bedrooms
- Allocated Parking
- Ample Storage
- Long Lease
- No Onward Chain

Marchside Close, Hounslow, TW5

First Floor



Total area (approx.) : 47.4 sq. m (510 sq. ft)