



Lansdowne Road, TW3

£599,950

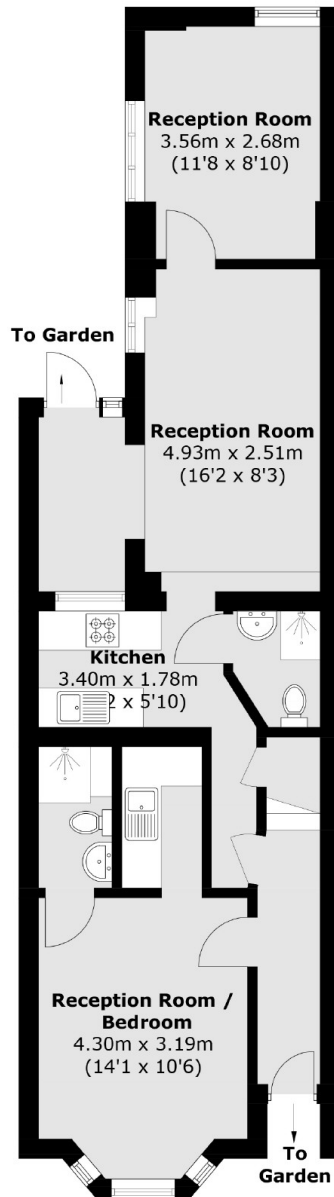
Offered to the market with no onward chain is a rare opportunity to buy this unique end of terrace Victorian property. Currently arranged over three floors consisting of five bedrooms, five bathrooms and one/two reception rooms, this would be an ideal purchase for a family or investor looking for a substantial home in a prime location. Further benefits include a large private rear garden.

Lansdowne Road is ideally placed for shopping facilities, restaurants and a convenient selection of amenities. Hounslow Central Station is just a short distance away and both Lampton and Inwood Park are within easy reach.

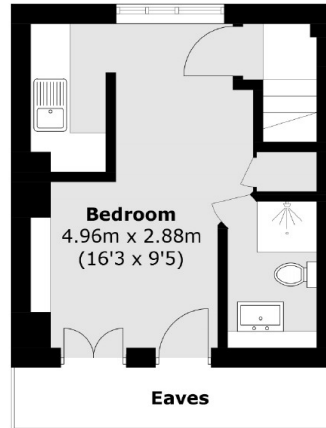
Features

- Victorian House
- End of Terrace
- Period Features
- Large Garden
- Scope to Modernise
- No Chain

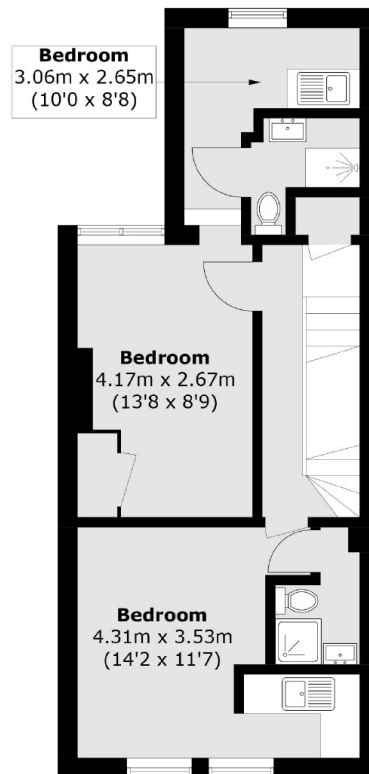
Lansdowne Road, Hounslow, TW3



Ground Floor



Second Floor



First Floor

Total area (approx.): 128.1 sq. m (1,378.8 sq. ft)
(Excluding Eaves)