



Beaumont Place, TW7

£649,950

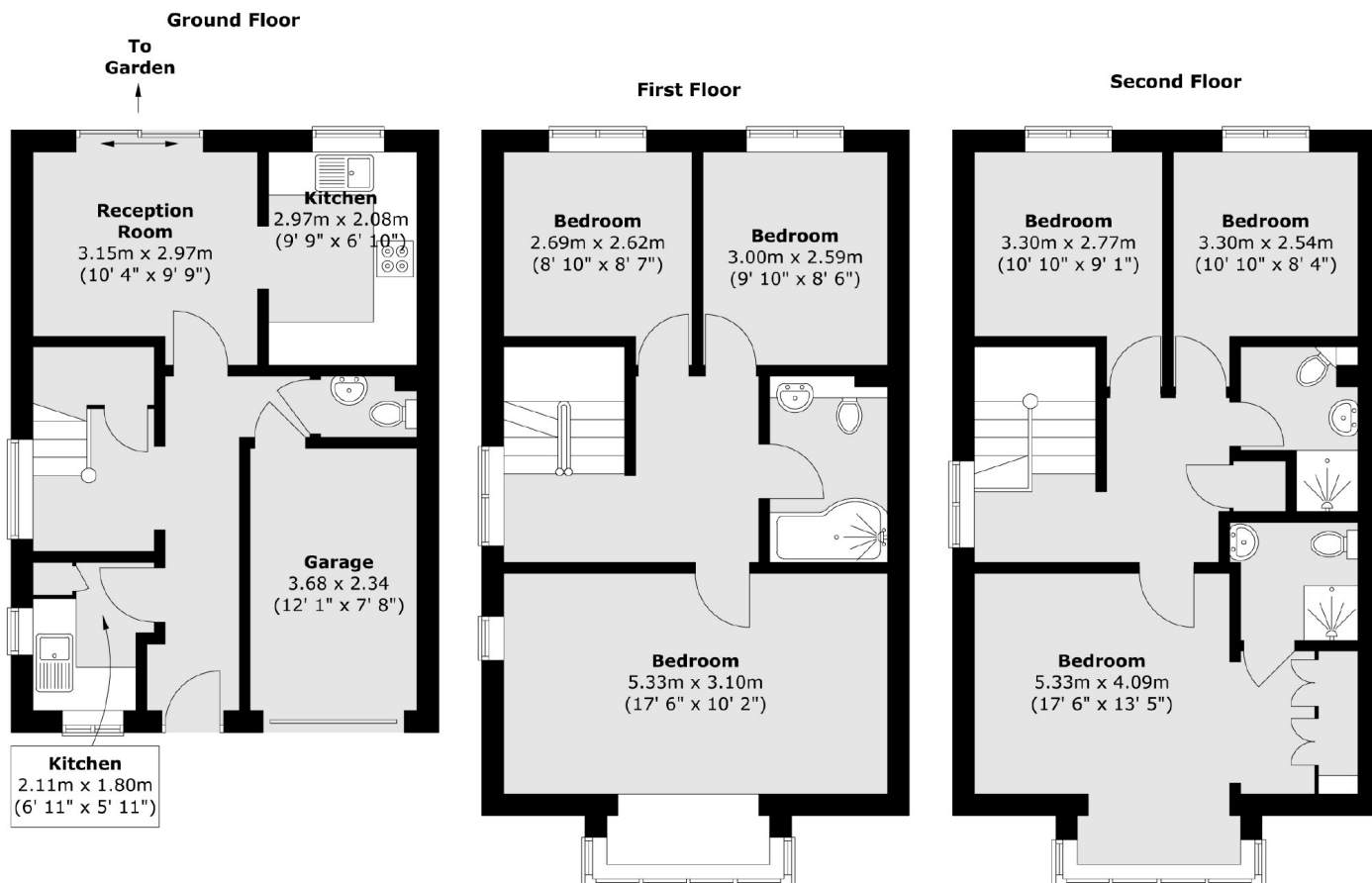
Offered to the market with no onward chain is this superbly spacious five bedroom corner plot town house, offering more than 1,500 sq ft of living space. This delightful house comprises of a kitchen/dining room, utility room, garage and a large first floor reception room with sliding doors leading to a wrap around garden.

Beaumont Place is a sought after residential development located on the borders of Twickenham and Isleworth and is situated close to local transport links and amenities. There are also excellent road links to and from Central London.

Features

- Five Bedrooms
- Three Bathrooms
- Garage / Driveway
- Wrap-around Garden
- Sought After Location
- No Onward Chain

Beaumont Place, Isleworth, TW7



Total area (approx.) : 144.5 sq. m (1555 sq. ft)