



Beaumont Place, TW7

£615,000

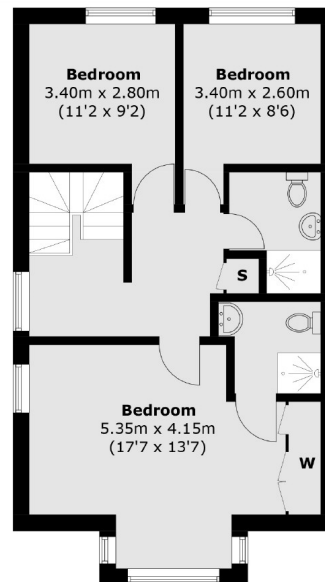
A superbly spacious five bedroom corner plot town house, in excess of 1500 sq ft of living space! Further comprising of a kitchen/dining room, utility room, garage and a large first floor reception room with sliding doors leading to a wrap around garden.

Beaumont Place is a sought after residential development located on the borders of Twickenham and Isleworth and is situated close to local transport links and amenities. There are also excellent road links to and from Central London.

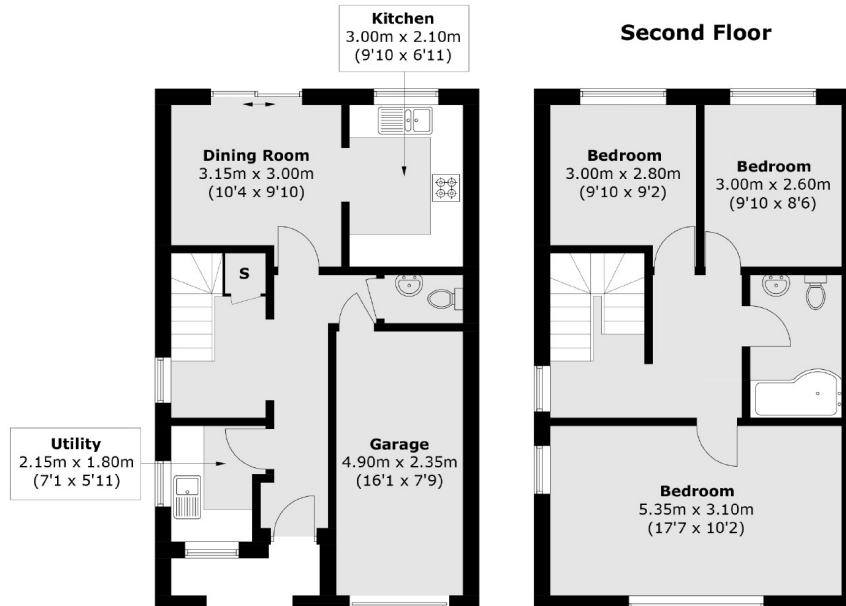
Features

- Five Bedrooms
- Three Bathrooms
- Garage
- Garden
- Parking
- No Onward Chain

Beaumont Place, Isleworth, TW7



Second Floor



Ground Floor

First Floor

Total area (approx.): 146.5 sq. m (1,576.9 sq. ft)

Contact

To arrange a viewing call our office on the number below or visit our website.



Energy Rating: D. We aim to make our particulars both accurate and reliable. However they are not guaranteed; nor do they form part of an offer or contract. If you require clarification on any points then please contact us, especially if you're traveling some distance to view. Please note that appliances and heating systems have not been tested and therefore no warranties can be given as to their good working order.