



Jersey Road, TW5

£925,000

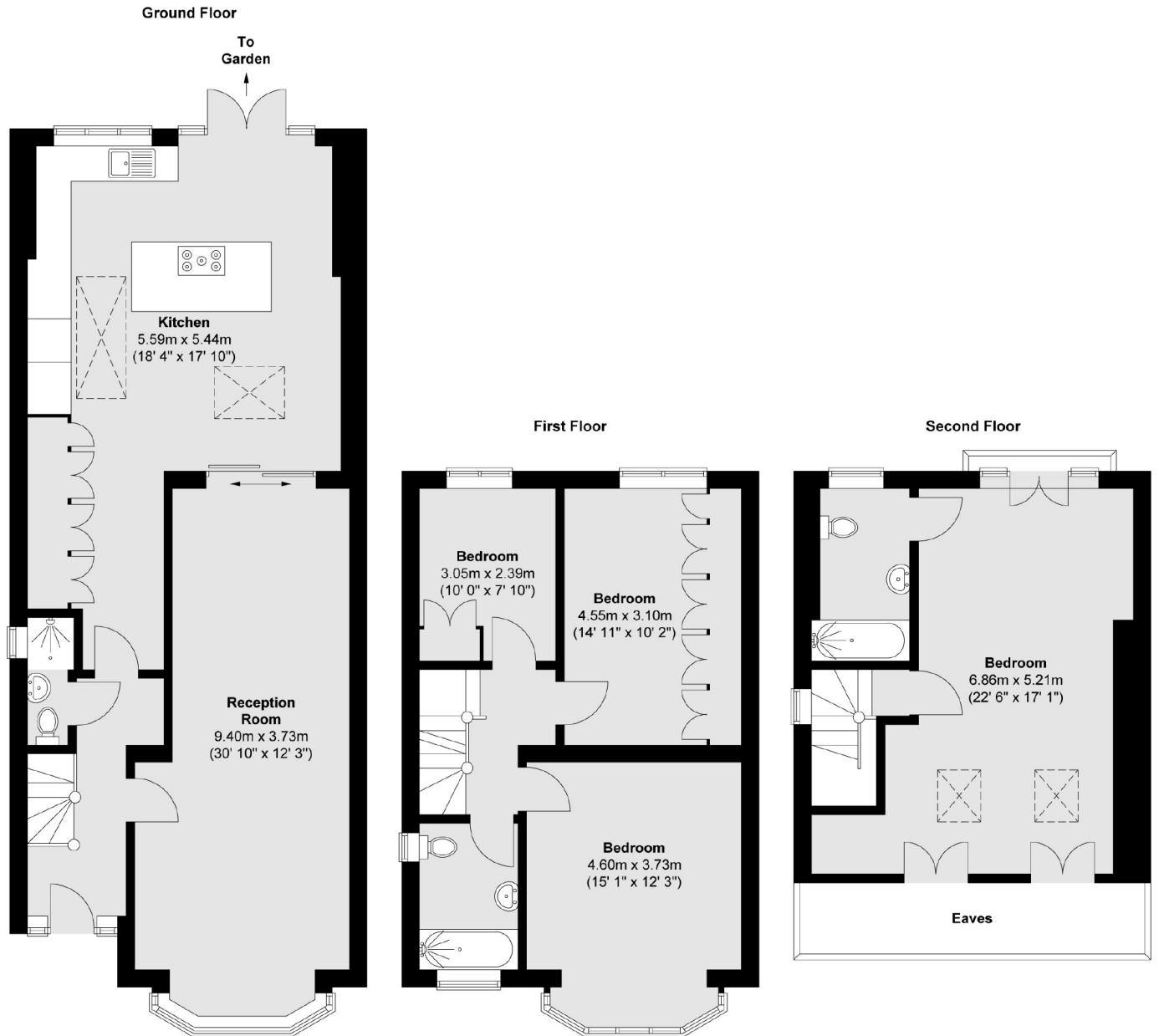
Offering more than 1,800 square feet of generous living space, we are delighted to bring to the market this beautifully presented four bedroom semi-detached family home. Located on one of the most sought after roads, this property is arranged over three floor, offering a double reception/dining room, an impressive 6 metre rear extended kitchen recently installed with the best quality finishes and Miele appliances throughout. Further benefits include three immaculate bathrooms (one on each floor), large landscaped rear garden and driveway for multiple cars.

Located a short walk to Osterley station (Piccadilly line), this property is close to excellent transport links. There is easy access to the A4/M4 in and out of London. The property is also situated close to a number of outstanding Ofsted rated schools, local amenities and parks.

Features

- Semi Detached
- Four Bedrooms
- Three Bathrooms
- Beautifully Presented
- Off Street Parking
- Large Rear Garden

Jersey Road, Hounslow, TW5



Total area (approx.) : 168.5 sq. m (1814 sq. ft)
Total balcony area (approx.) : 0.7 sq. m (7 sq. ft)