



Spring Grove Crescent, TW3

£549,000

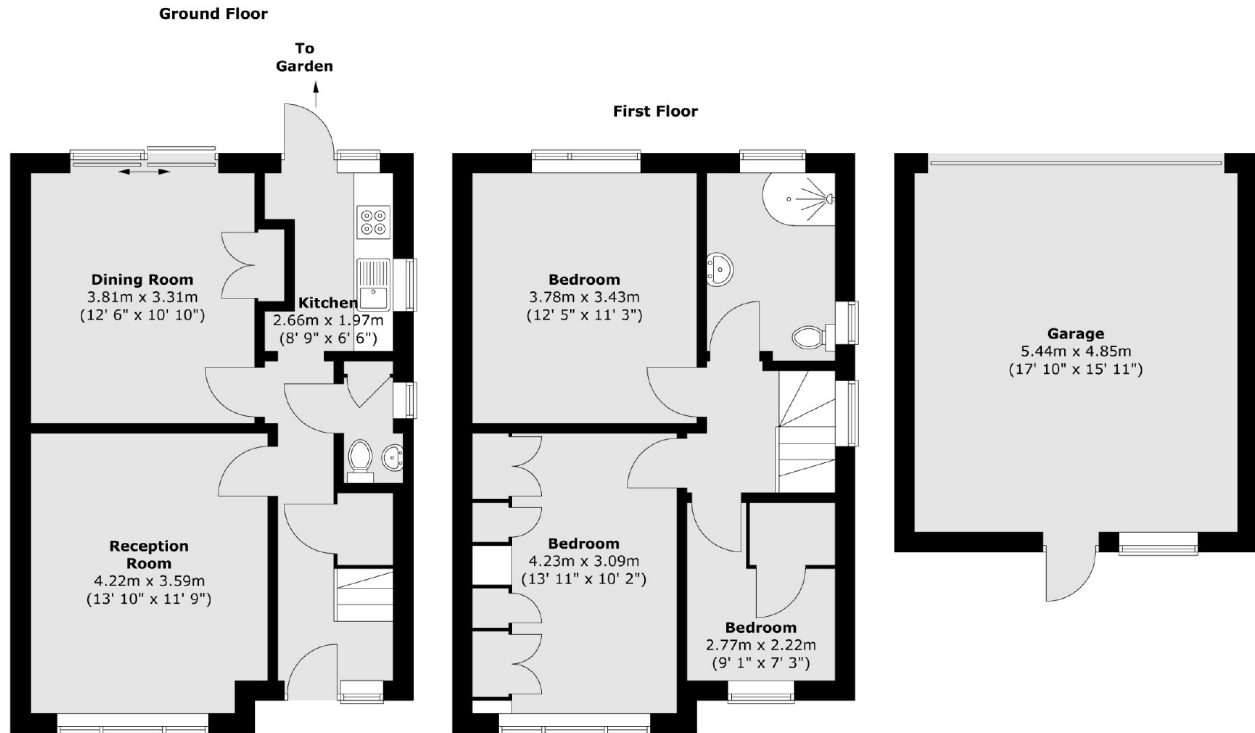
A great opportunity to purchase a spacious three bedroom semi detached property. The property is ideal for those looking to put their own stamp on a property with benefits including off street parking, separate rear garage, a large rear garden, and plenty of potential to extend (STPP). Offered to the market with no onward chain.

The property is conveniently situated in a quiet residential road a short walk to both Osterley and Hounslow East tube stations (Piccadilly line), as well as excellent local schools and parks. Hounslow High Street is also close by hosting an array of shops and restaurants.

Features

- Semi Detached
- Three Bedrooms
- Off Street Parking
- Two Reception Rooms
- Large Rear Garden
- No Onward Chain

Spring Grove Crescent, Hounslow, TW3



Total area (approx.) : 88.7 sq. m (955 sq. ft)
Total garage area (approx.) : 26.9 sq. m (289 sq. ft)