



Grove Road, TW3

£699,950

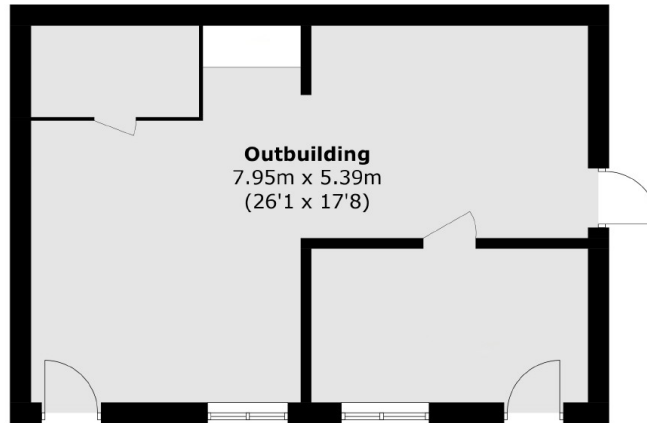
Offered to the market with no onward chain is this superb three bedroom semi detached house. Further benefits include off-street parking for multiple cars, side access, private rear garden with substantial self-contained annex (with own entrance). There is further scope to extend subject to planning permission.

Superbly situated a short walk away from Hounslow high street offering a variety of shops and restaurants. Hounslow Central Tube Station (Piccadilly Line) and Hounslow Train Station are both within easy access to provide links to inner London and Heathrow Airport.

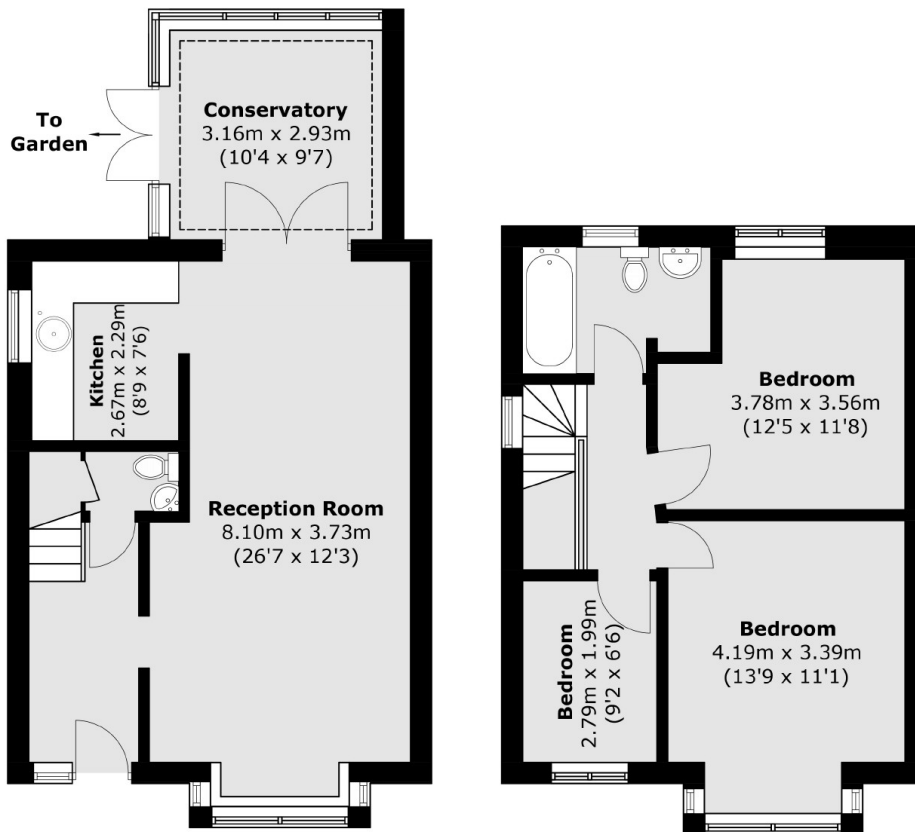
Features

- Semi Detached
- Three Bedrooms
- Driveway
- Self-Contained Annex
- No Chain
- Scope to Extend (STPP)

Grove Road, Hounslow, TW3



(Not Shown In Actual
Location / Orientation)



Ground Floor

First Floor

Total area (approx.): 92.6 sq. m (996.7 sq. ft)
Outbuilding: 43.2 sq. m (465.0 sq. ft)