



## Parkside Road, TW3

£749,950

Offered to the market with no onward chain, we are delighted to bring to the market this delightful semi-detached Victorian house. Arranged over three floors and packed with period features and high ceilings, this charming house comprises of four bedrooms, two bathrooms and two reception rooms. Further benefits include a private rear garden, off street parking and additional scope to extend (STPP)

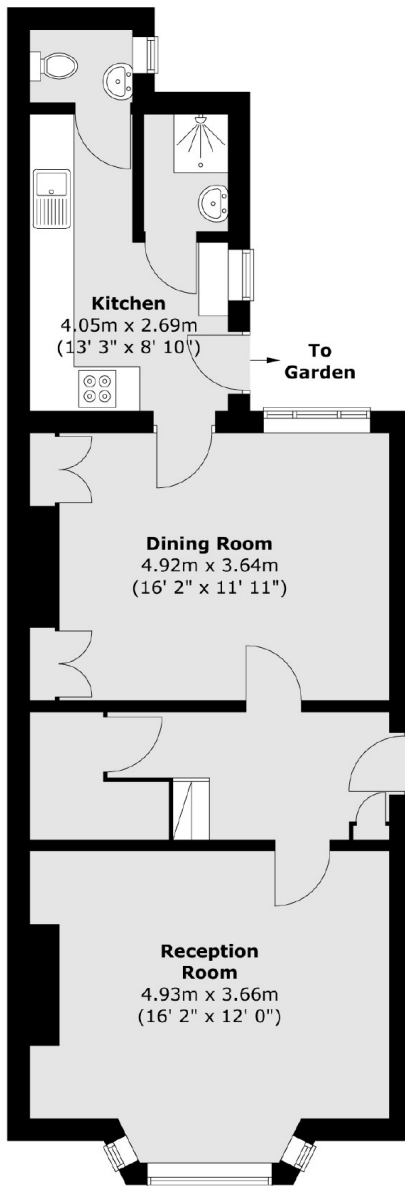
Situated in a conservation area on a sought after and premier tree lined road, close to excellent local schools, park and transport links. Neighbouring areas of Whitton, Twickenham and Isleworth are all within easy reach.

### Features

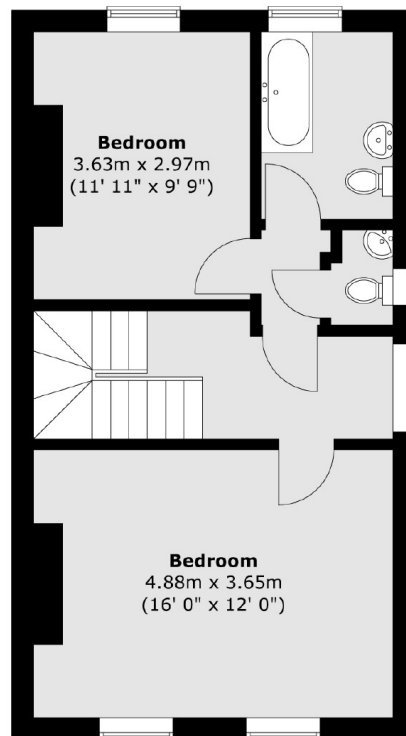
- Victorian Semi Detached House
- Four Bedrooms
- Two Bathrooms
- Large Rear Garden
- Off Street Parking
- No Chain

# Parkside Road, Hounslow, TW3

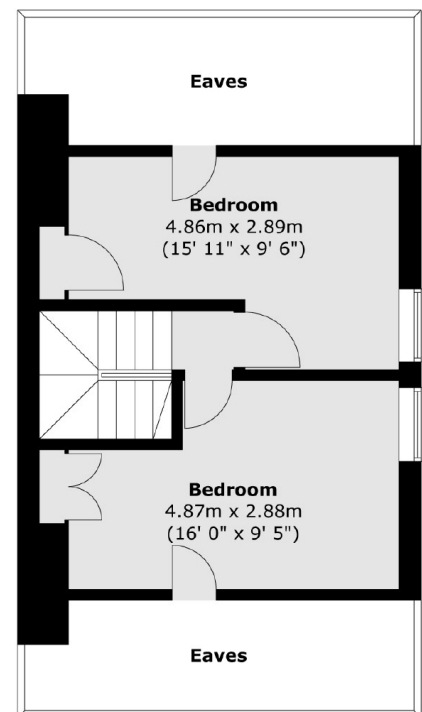
**Ground Floor**



**First Floor**



**Second Floor**



Total area (approx.) : 135.5 sq. m (1458 sq. ft)  
(Excluding Eaves)