



Jersey Road, TW7

£1,299,950

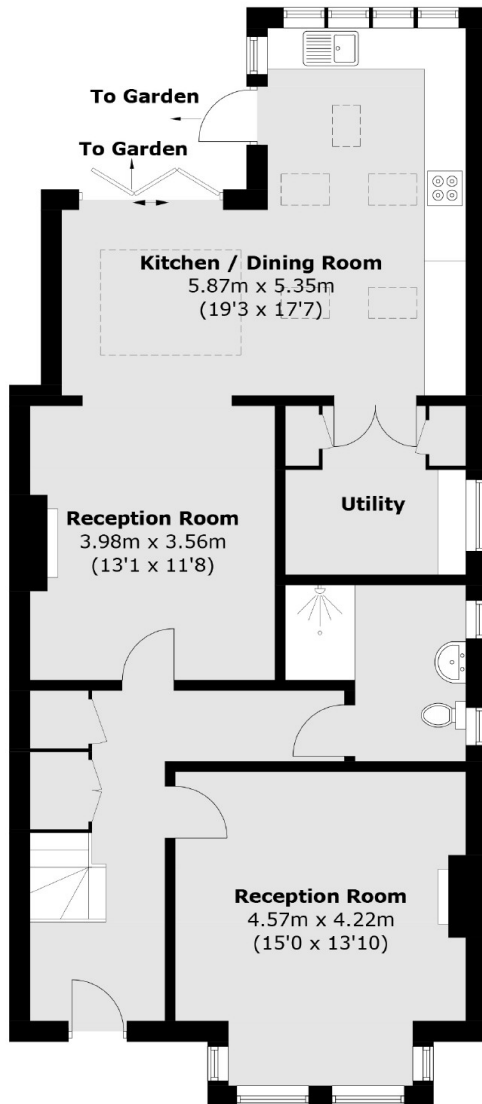
Offered to the market with no onward chain, we are delighted to bring to the market a rare opportunity to acquire this stunning four bedroom semi detached family home with unrivalled views overlooking Osterley Park.

Located on one of the most sought after residential roads in Osterley and Isleworth, this house is located moments away the gates of Osterley Park and House offering beautiful open green spaces of this tremendous and iconic National Park. Osterley tube station (Piccadilly line) is a short walk away, as are local schools and amenities.

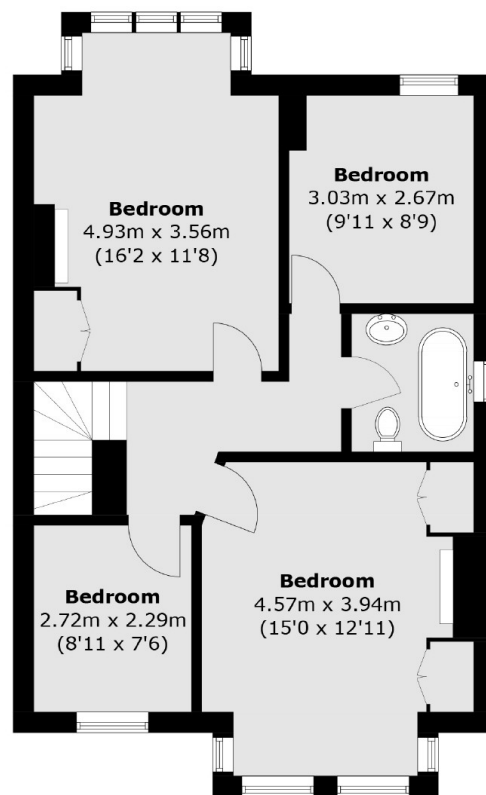
Features

- Semi Detached Four Bedroom
- Large South-Facing Garden
- Period Features
- Off Street Parking
- Scope to Extend (STPP)
- Chain Free

Jersey Road, Isleworth, TW7



Ground Floor



First Floor

Total area (approx.): 146.0 sq. m (1571.5 sq. ft)