



Golden Court, TW7

£199,950

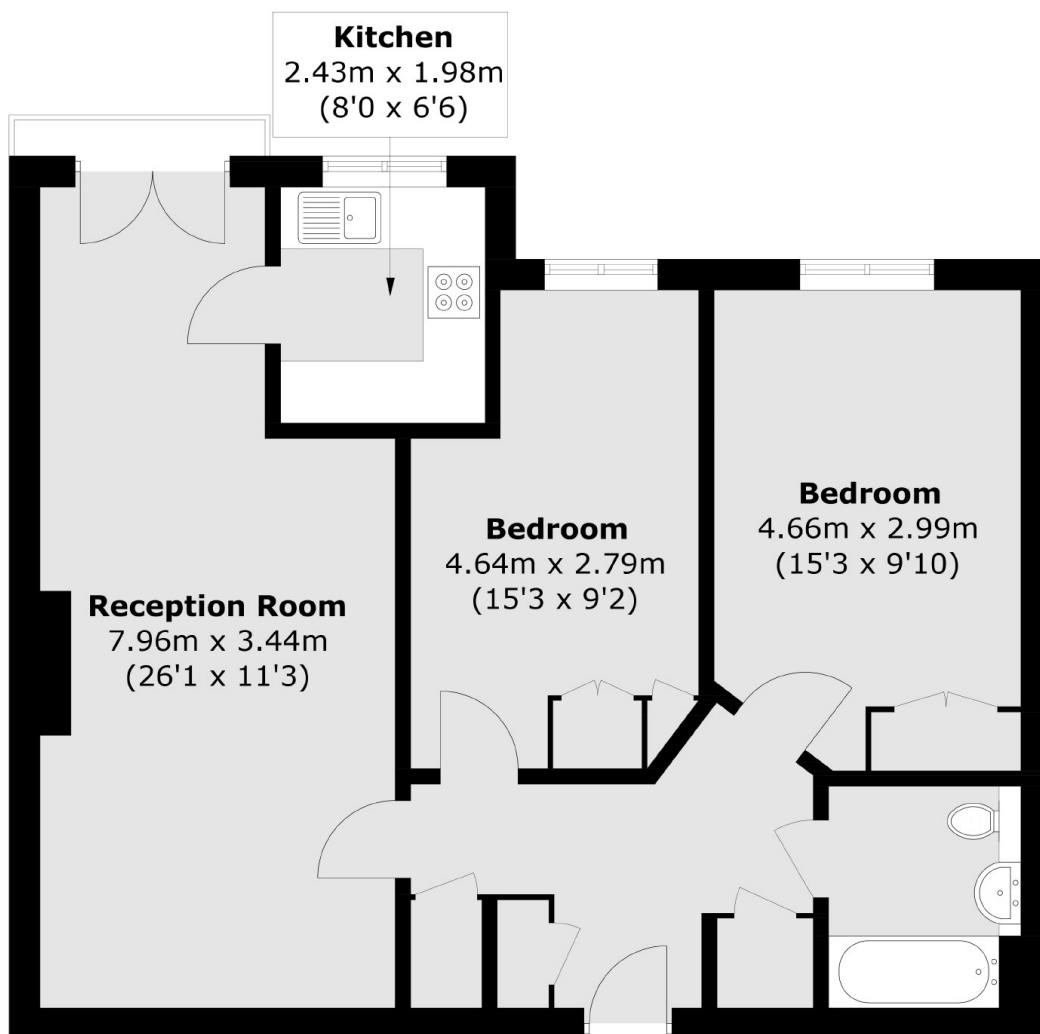
Offered to the market with no onward chain is this bright and spacious two double bedroom retirement home for over 60s only. Benefitting from a spacious reception room with ample storage throughout and gated parking for residents.

Golden Court is conveniently situated close to local amenities and parks. There are excellent transport links nearby including regular bus services and both Hounslow East (Piccadilly line) and Isleworth stations.

Features

- Over 60's block
- Two Double Bedrooms
- Generous Reception Room
- Lift Service to all Floors
- Private gated residents parking
- Communal Gardens

Golden Court, Isleworth, TW7



Total area (approx.): 70.8 sq. m (762.1 sq. ft)