



Elmer Gardens, TW7

£3,200 Per calendar month

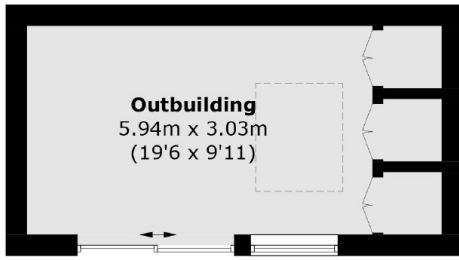
Presenting a stunning four-bedroom home boasting off-street parking for two cars. Enjoy a spacious double reception room with plush carpeting/flooring, seamlessly flowing into a modern eat-in kitchen with integrated appliances. Step outside to a private garden oasis with a charming outbuilding.

Elmer Gardens is located within 1.0 mile from Isleworth mainline station and Hounslow town centre and the Piccadilly line. Richmond and Twickenham are also within easy access, as are road links into and out of central London.

Features

- Semi Detached House
- Four Bedrooms
- Two Receptions
- Two Bathrooms
- Private Garden
- Private Driveway

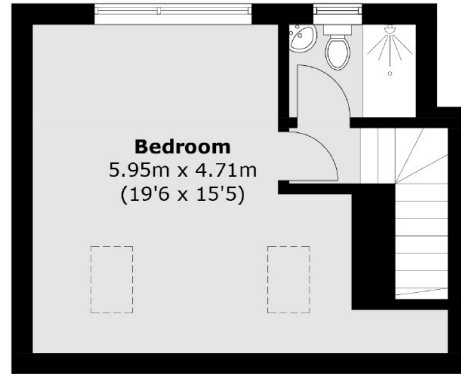
Elmer Gardens, Isleworth, TW7



Outbuilding
5.94m x 3.03m
(19'6" x 9'11")

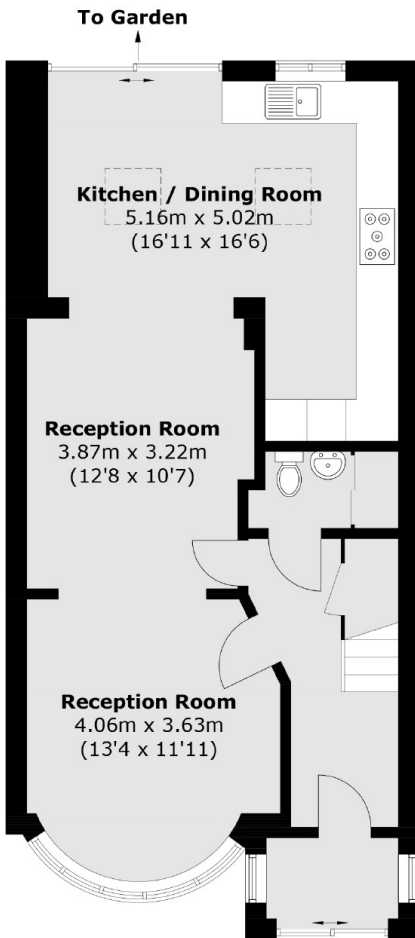
Outbuilding

(Not Shown In Actual Location / Orientation)



Bedroom
5.95m x 4.71m
(19'6" x 15'5")

Second Floor

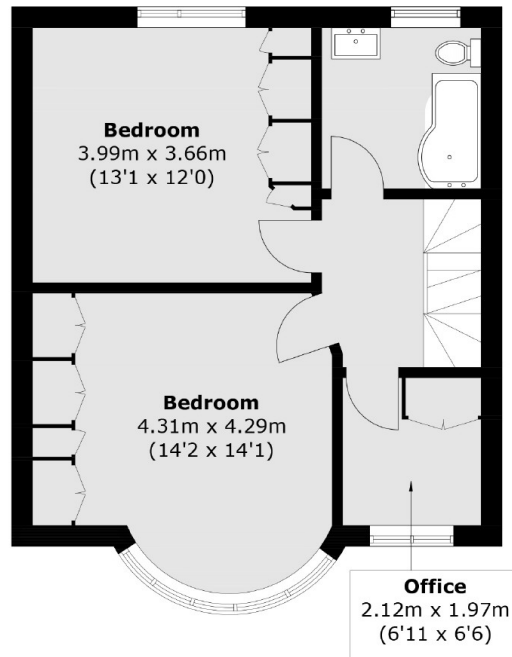


Kitchen / Dining Room
5.16m x 5.02m
(16'11" x 16'6")

Reception Room
3.87m x 3.22m
(12'8" x 10'7")

Reception Room
4.06m x 3.63m
(13'4" x 11'11")

Ground Floor



Bedroom
3.99m x 3.66m
(13'1" x 12'0")

Bedroom
4.31m x 4.29m
(14'2" x 14'1")

Office
2.12m x 1.97m
(6'11" x 6'6")

First Floor

Total area (approx.): 136.6 sq. m (1,470.4 sq. ft)
Outbuilding (approx.): 18.1 sq. m (194.8 sq. ft)