



## Linkfield Road, TW7

### £449,950

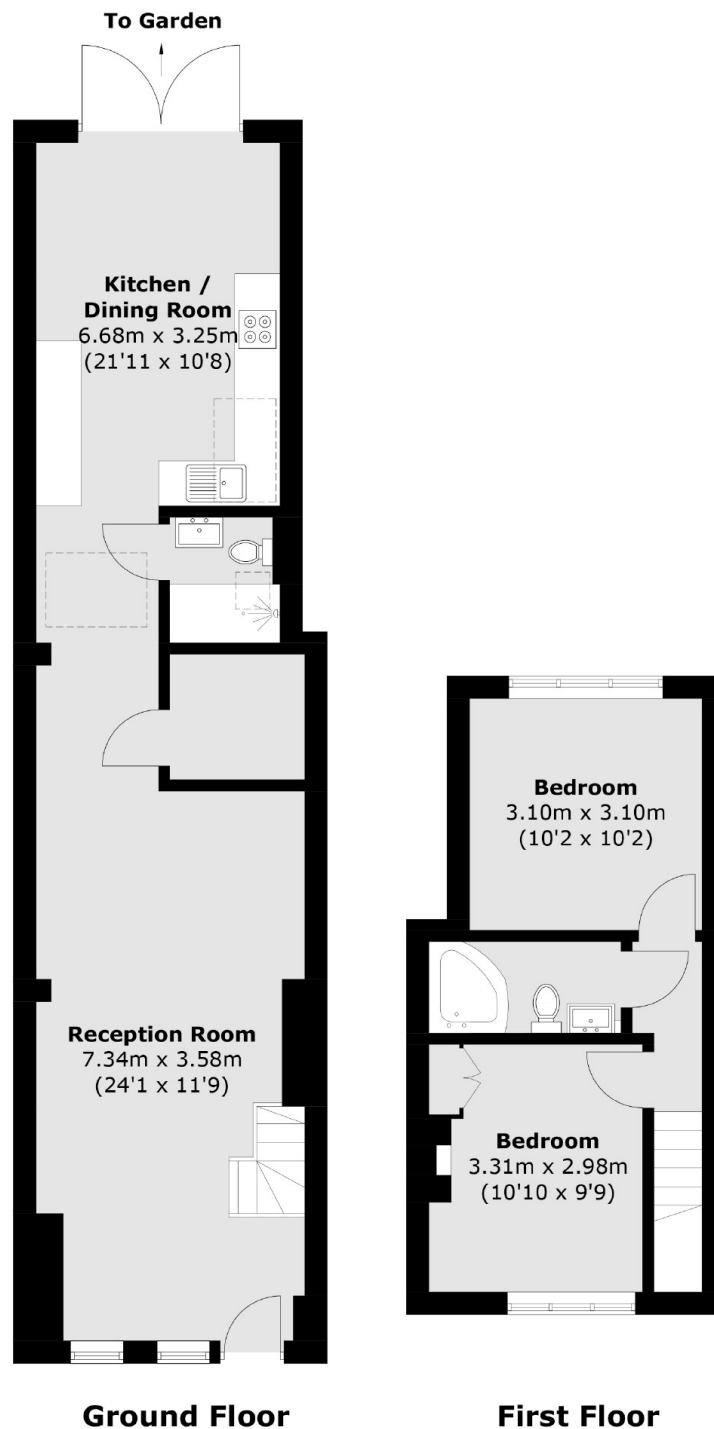
Offered to the market with no onward chain, we are delighted to bring to the market this unpretentious artists' two bed, two bath cottage in favoured Isleworth road to fresh. Unusual, flexible, light and spacious accommodation with patio garden and open plan living.

Near top transport to central London. Easy reach locally; Richmond, Twickenham and St Margaret's, parks etc. Fun!

### Features

- Victorian Family Home
- Double Reception
- Open Plan Kitchen
- Two Bathroom's
- Secluded Patio Garden
- No Onward Chain

# Linkfield Road, Isleworth, TW7



Total area (approx.): 82.6 sq. m (889.1 sq. ft)