



Lyncroft Gardens, TW3

£635,000

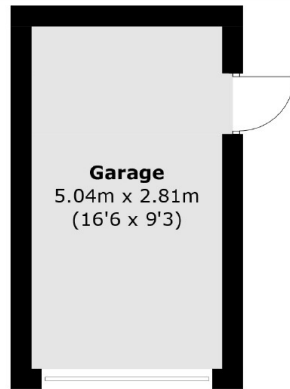
Arranged over three floors is this beautifully presented four bedroom, two bathroom semi-detached family home. Benefits include a loft conversion with en-suite, rear extended reception/dining room, large private rear garden and garage. There is further scope to extend (STPP)

Lyncroft Gardens is a sought after road ideally located with local amenities including shops, parks and schools close by. There are also excellent transport links with easy access to neighbouring areas as well as Heathrow Airport and Central London.

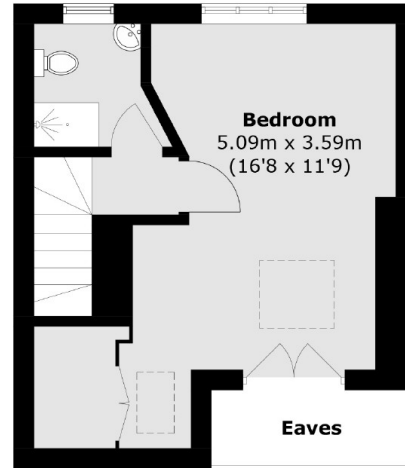
Features

- Semi Detached
- Four Bedrooms
- Two Bathrooms
- Side Access/Garage
- Scope To Extend (STPP)
- Excellent Transport Links

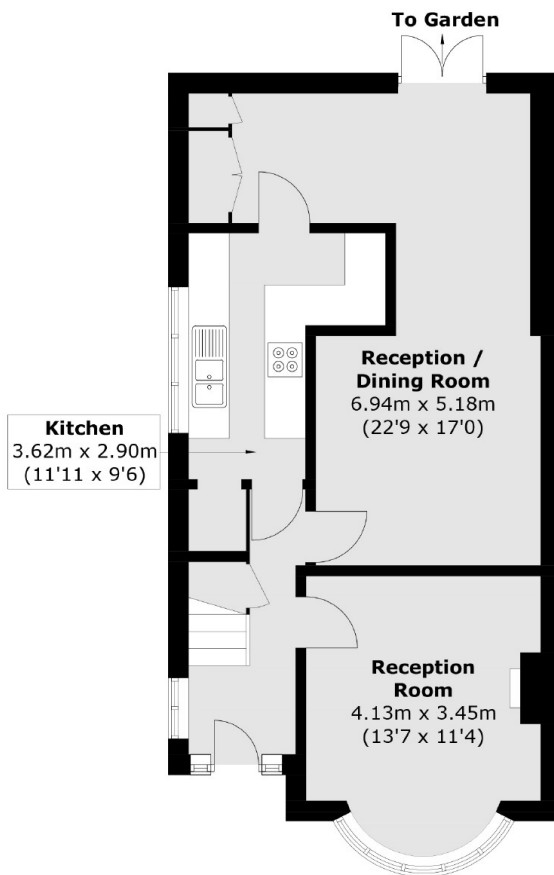
Lyncroft Gardens, Hounslow, TW3



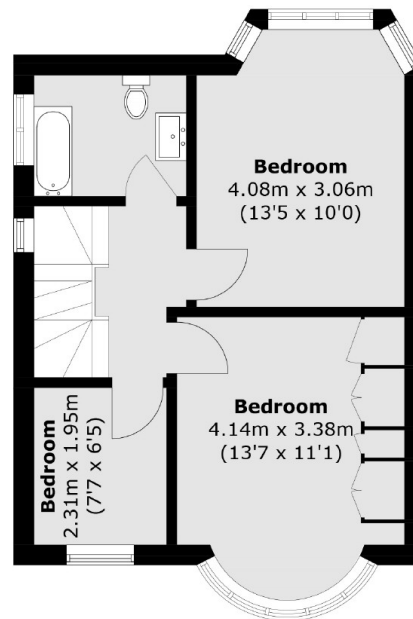
(Not Shown In Actual
Location / Orientation)



Second Floor



Ground Floor



First Floor

Total area (approx.): 124.7 sq. m (1,342.2 sq. ft)

Garage : 14.3 sq. m (153.9 sq. ft)

(Excluding Eaves)