



Hall Road, TW7

£725,000

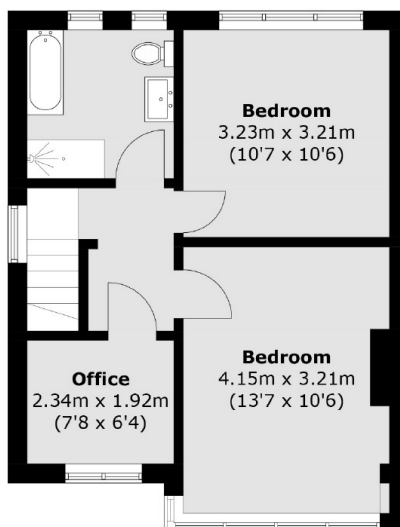
We are delighted to bring to the market this light, bright and substantial semi detached family home. Immaculately presented throughout, this gorgeous home comprises of four bedrooms, two bathrooms, large private rear garden and driveway for multiple cars. There is further scope to extend (STPP).

Hall road is a popular residential road and is well positioned for excellent local schools, amenities and parks. Neighbouring areas of Whitton, Twickenham, Richmond and St Margarets are nearby as well as easy access to A4/M4 to London and Heathrow.

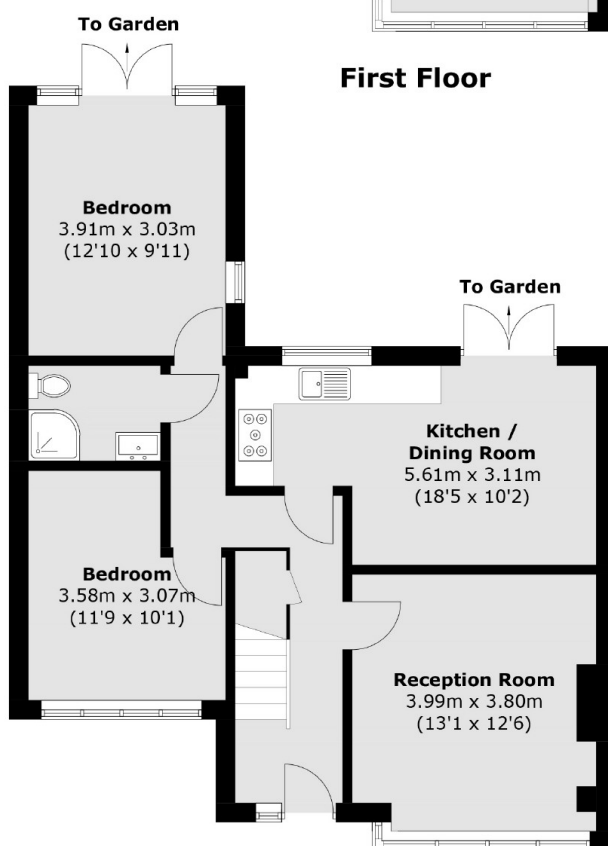
Features

- Semi Detached
- Four Bedrooms
- Excellent Condition
- Potential to Extend (STPP)
- Large Private Garden
- Driveway for Multiple Cars

Hall Road, Isleworth, TW7



First Floor



Ground Floor

Total area (approx.): 110.2 sq. m (1,186.2 sq. ft)