



Borough Road, TW7

£349,950

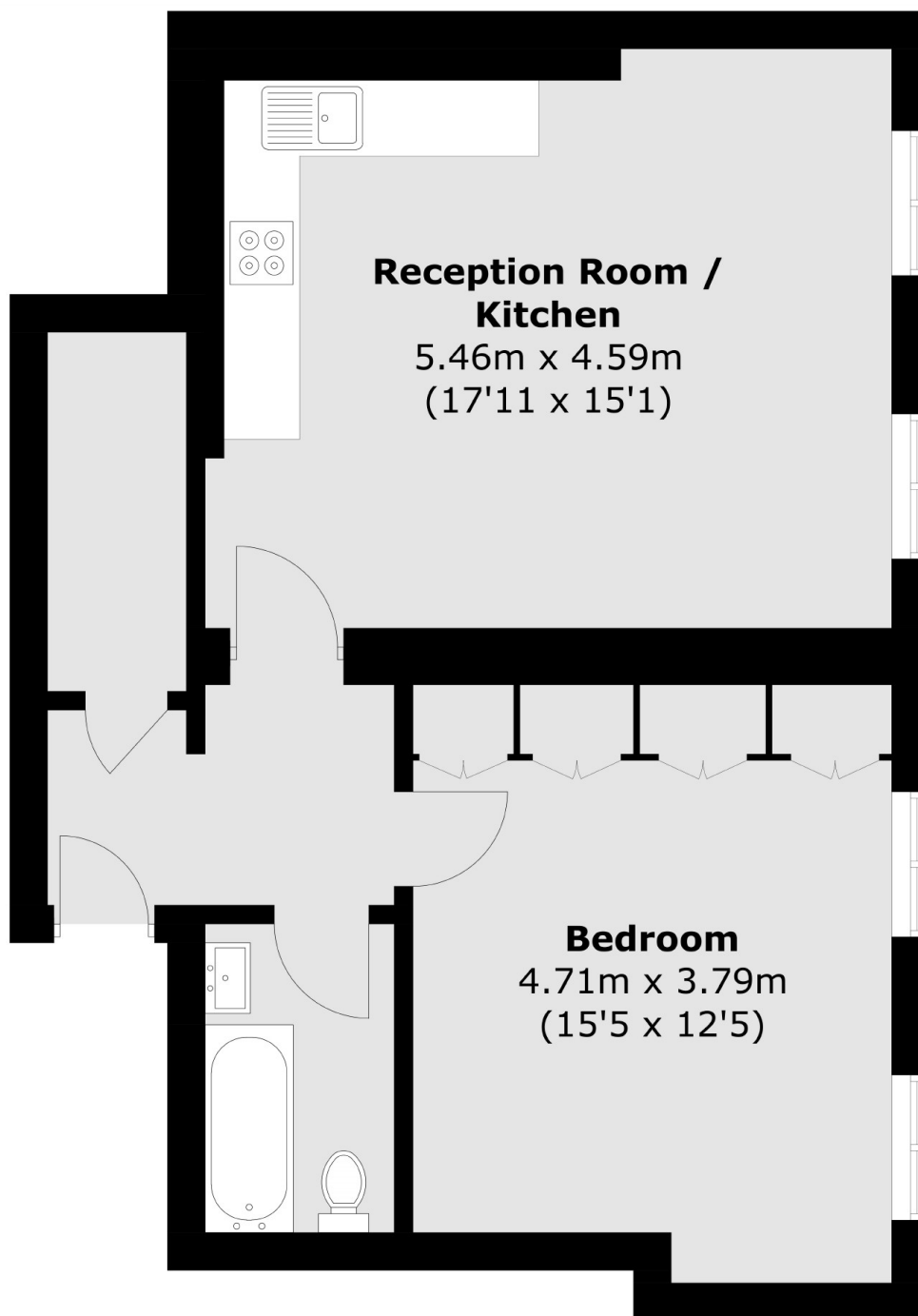
This larger than average one bedroom apartment is located on the first floor of an imposing building in a gated development. The property is beautifully presented and recently renovated throughout, consisting of a large open plan reception room with a modern kitchen, double bedroom and a three-piece bathroom. Further benefits include no onward chain, allocated parking space and long lease.

Lancaster House is superbly situated in a quiet residential area close to local parks, schools and amenities. Both Osterley Tube Station (Piccadilly Line) and Isleworth Train Station are nearby providing excellent links to Central London and Heathrow Airport.

Features

- Unique Period Conversion
- Large One Double Bedroom
- Gated Development
- Stunning Communal Gardens
- Long Lease
- No Onward Chain

Borough Road, Isleworth, TW7



Total area (approx.): 57.7 sq. m (621.1 sq. ft)

Dexters

Isleworth
568 London Road
Isleworth
TW7 4EP

Sales
020 8560 1177

Energy Rating: C. We aim to make our particulars both accurate and reliable. However they are not guaranteed; nor do they form part of an offer or contract. If you require clarification on any points then please contact us, especially if you're traveling some distance to view. Please note that appliances and heating systems have not been tested and therefore no warranties can be given as to their good working order.

 **RICS** | Regulated
Estate Agent
and Letting Agent

dexters.co.uk