



Newcombe Gardens, TW4

£640,000

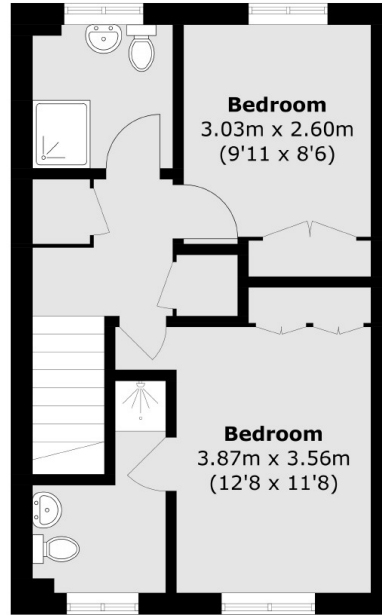
Offered to the market with no onward chain, we are pleased to launch this spacious four bedroom freehold house. Presented over three floors, benefits include large kitchen/dining area, off-street parking, a private rear garden, downstairs WC, and three bathrooms (two en suites).

Newcombe Gardens is a quiet residential road within close proximity to Heathlands School (Outstanding Ofstead rated), local transport links and Hounslow town centre. There is also easy access to Whitton, Twickenham and Isleworth.

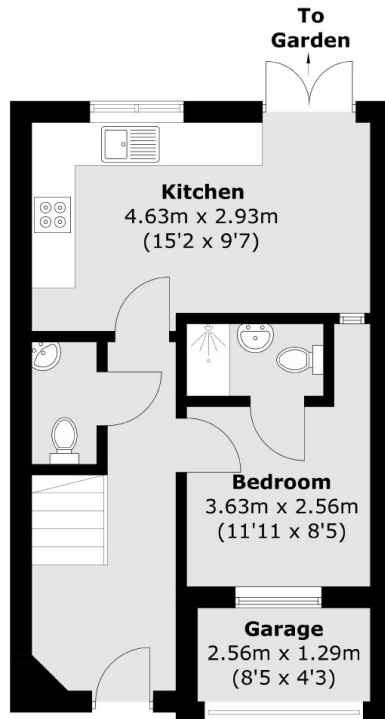
Features

- Four Bedrooms
- Mid-Terrace House
- Three Bathrooms
- Off-Street Parking
- No Onward Chain
- Potential To Extend (STPP)

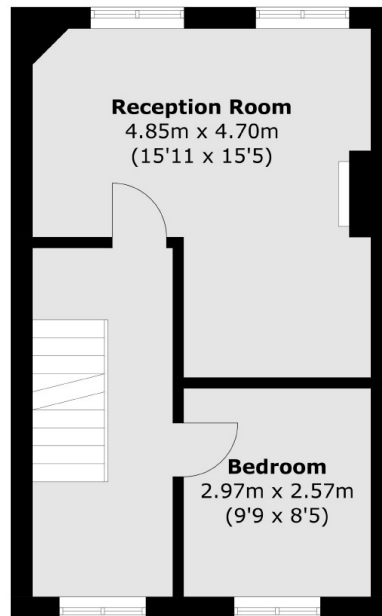
Newcombe Gardens, Hounslow, TW4



Second Floor



Ground Floor



First Floor

Total area (approx.): 107.6 sq. m (1,158.1 sq. ft)

Garage area (approx.): 3.4 sq. m (36.6 sq. ft)