



Golden Court, TW7

£180,000

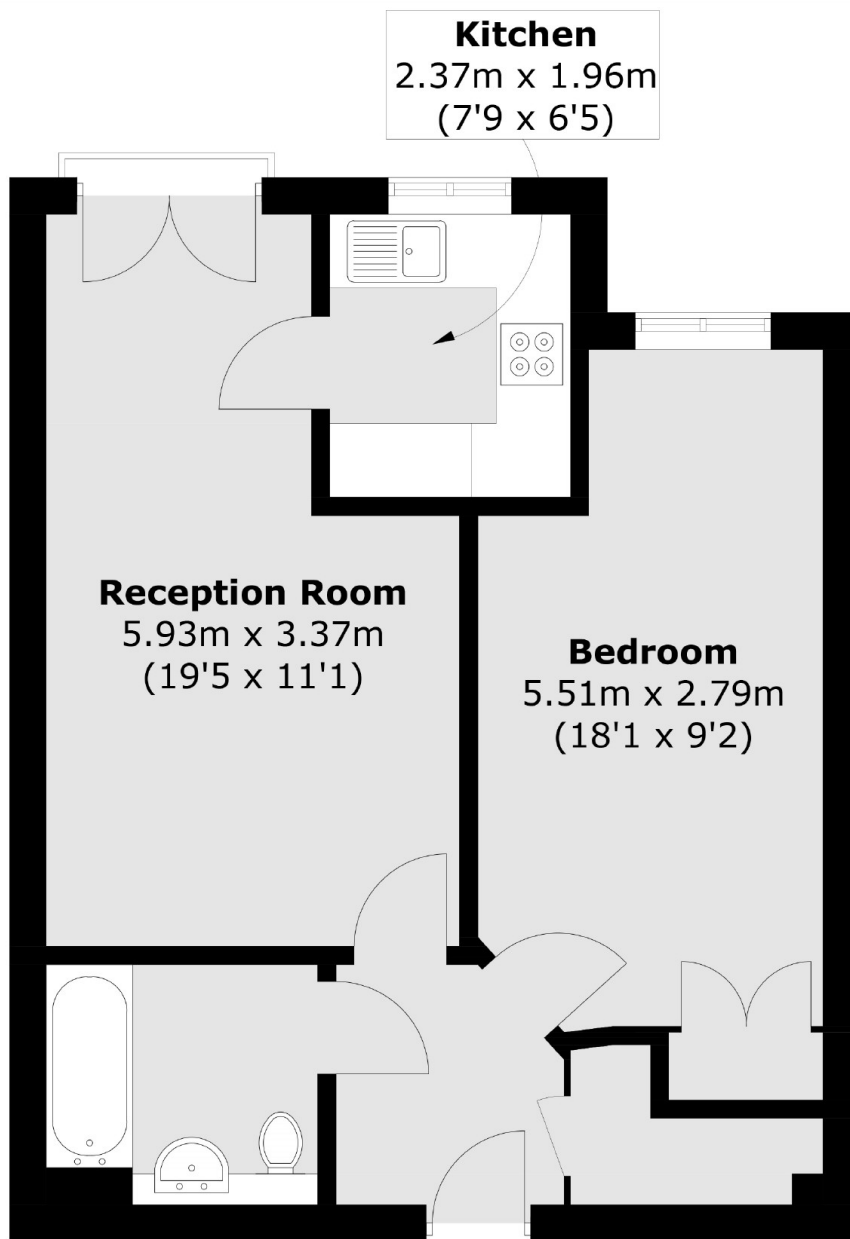
A spacious and delightful one double bedroom retirement apartment for over 60s only. Positioned on the third floor, the property is well presented throughout and further benefits from a large reception room, ample storage, gated parking, lift service and beautiful communal gardens. Offered to the market with no onward chain.

Golden Court is conveniently situated close to local amenities and parks. There are excellent transport links nearby including regular bus services and both Hounslow East (Piccadilly line) and Isleworth stations.

Features

- One Double Bedrooms
- Gated Parking
- Lift Service
- Communal Gardens
- Juliette Balcony
- Close To Transport

Golden Court, Isleworth, TW7



Total area (approx.): 48.8 sq. m (525.3 sq. ft)