



## Channel Close, TW5

£499,950

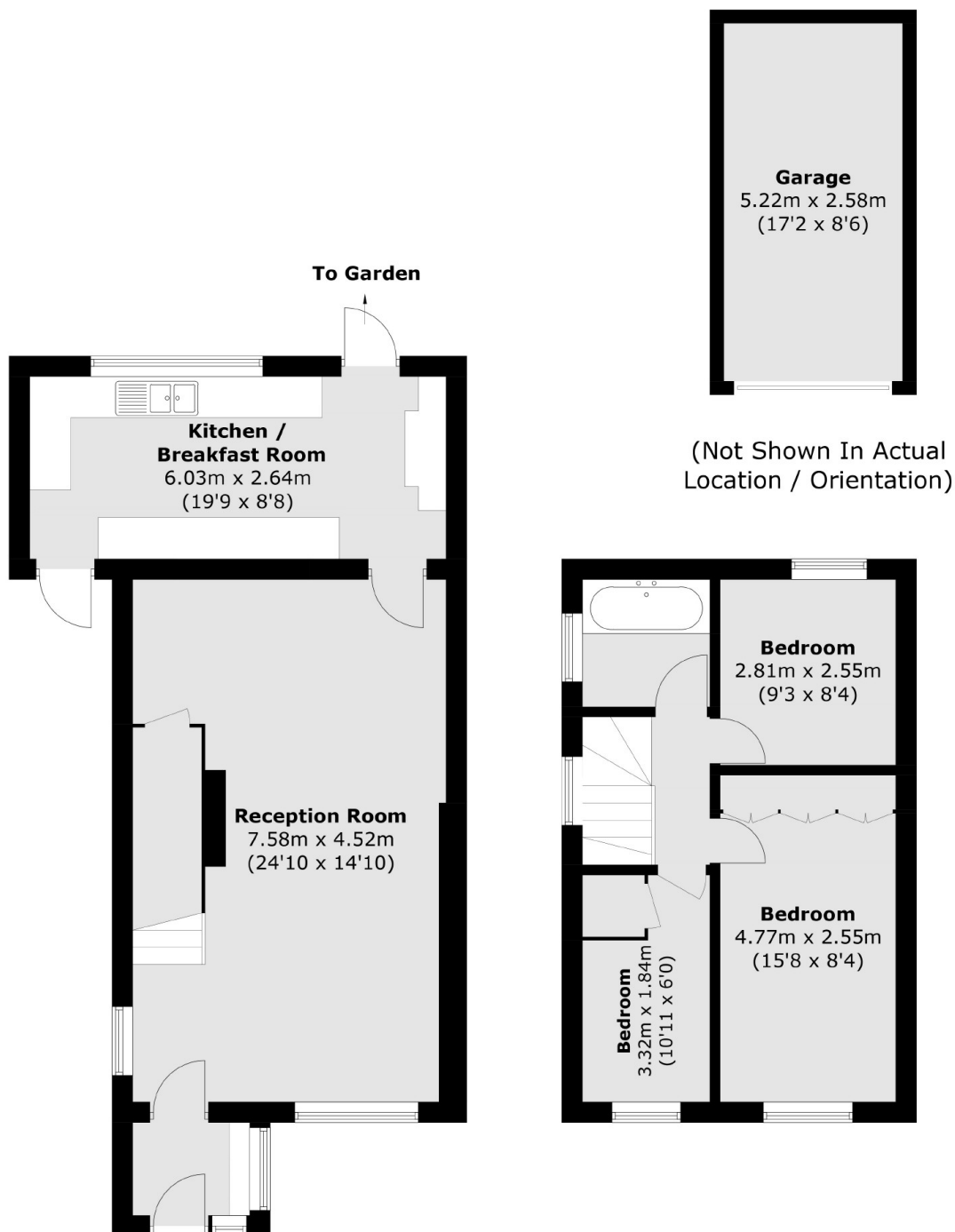
A charming three bedroom family home on the borders of Osterley. Benefits include large extended kitchen, generous loft storage with floor boarding and lights, off-street parking for two cars, side access, a separate garage, and potential to extend further (STPP).

Channel Close is a short walk away from the Osterley Tube Station, Osterley Park as well as easy accessible to A4/M4. Local shops, outstanding schools and cafés are all around the corner from this property.

### Features

- End-Of-Terrace
- Three Bedrooms
- Off-Street Parking
- Potential To Extend (STPP)
- Private Garden
- Separate Garage

# Channel Close, Hounslow, TW5



Total area (approx.): 89.3 sq. m (961.2 sq. ft)  
Garage :13.5 sq. m (145.3 sq. ft)