



Cross Lances Road, TW3

£485,000

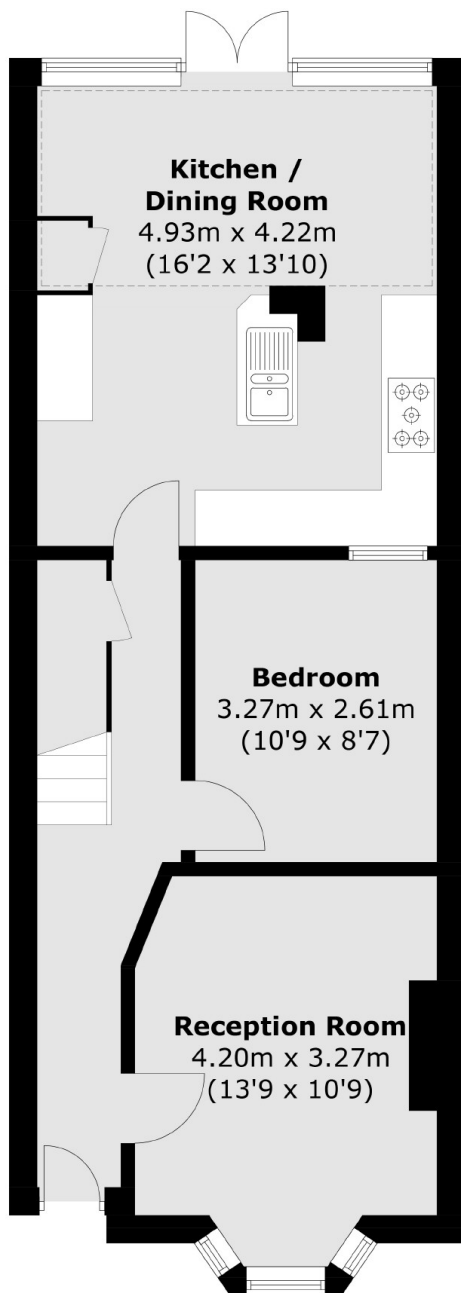
A beautifully presented, Victorian family home situated on a popular residential road. The property offers two bedrooms, two receptions, an open kitchen/dining area and no onward chain.

Cross Lances Road is well located between Hanworth Road and Whitton Road, close to Hounslow British Rail Station and the main shopping centre. There are a number of well regarded local schools and parks within a short walk away.

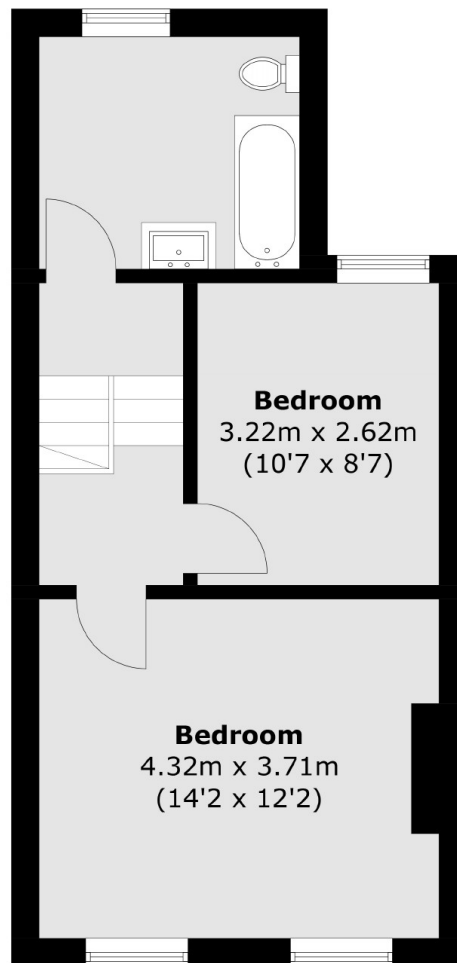
Features

- Two Double Bedrooms
- Mid-Terrace House
- Two Receptions
- Potential To Extend (STPP)
- No Onward Chain
- Close To Amenities

Cross Lances Road, Hounslow, TW3



Ground Floor



First Floor

Total area (approx.): 90.6 sq. m (975.2 sq. ft)