



Wellington Road South, TW4

£550,000

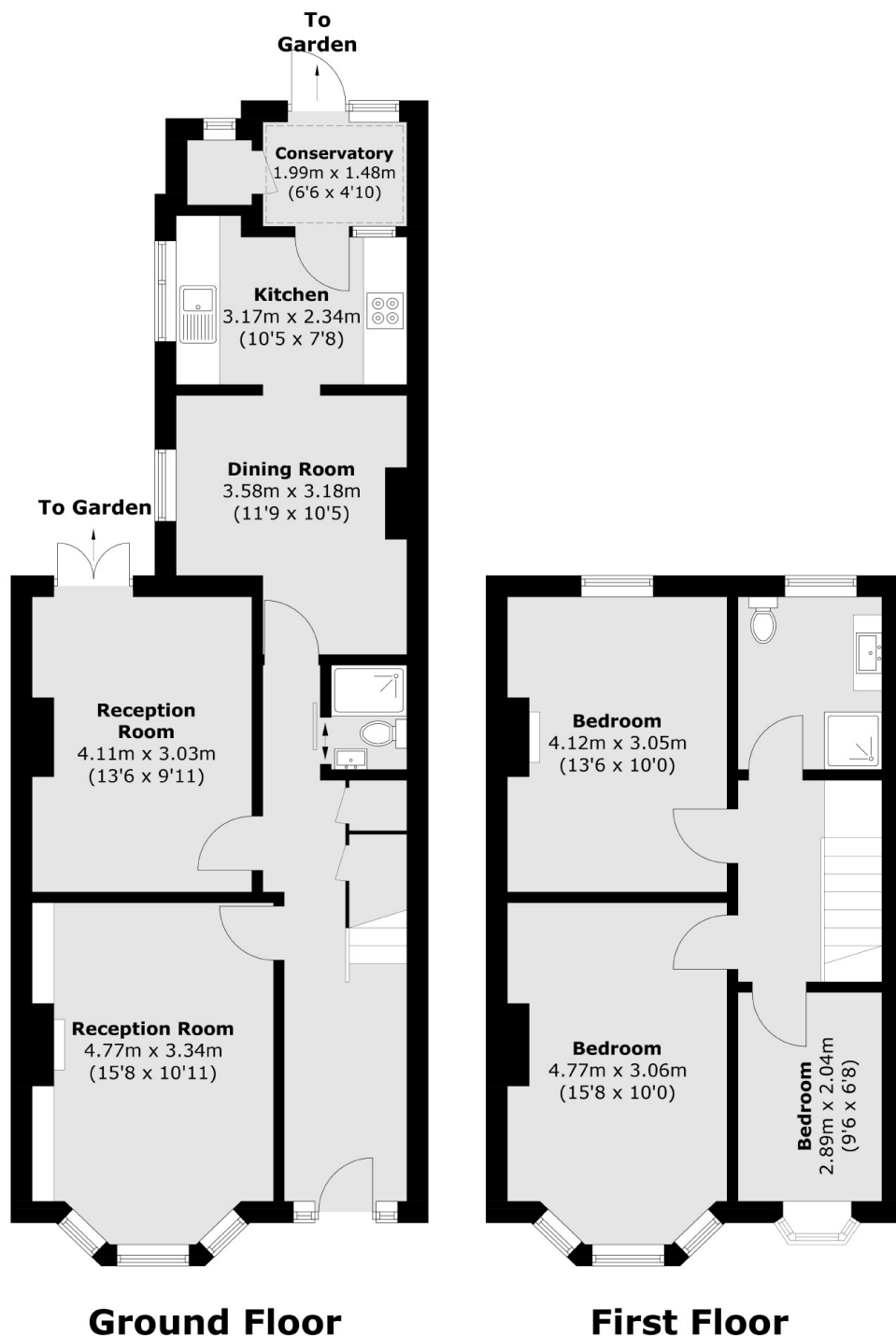
A superbly presented three bedroom family home located on a popular road. The property benefits from two bathrooms, two reception rooms and beautiful rear garden, as well as off street parking.

The property is conveniently positioned close to local amenities, Heathland School (Outstanding Ofstead rating) and parks. The property is also situated near Whitton with a variety of shops and restaurants.

Features

- Three Bedrooms
- Mid-Terrace House
- Off Street Parking
- Two Bathrooms
- Potential To Extend (STPP)
- Close to Amenities

Wellington Road South, Hounslow, TW4



Total area (approx.): 110.6 sq. m (1,190.5 sq. ft)