



St. Stephens Road, TW3

£315,000

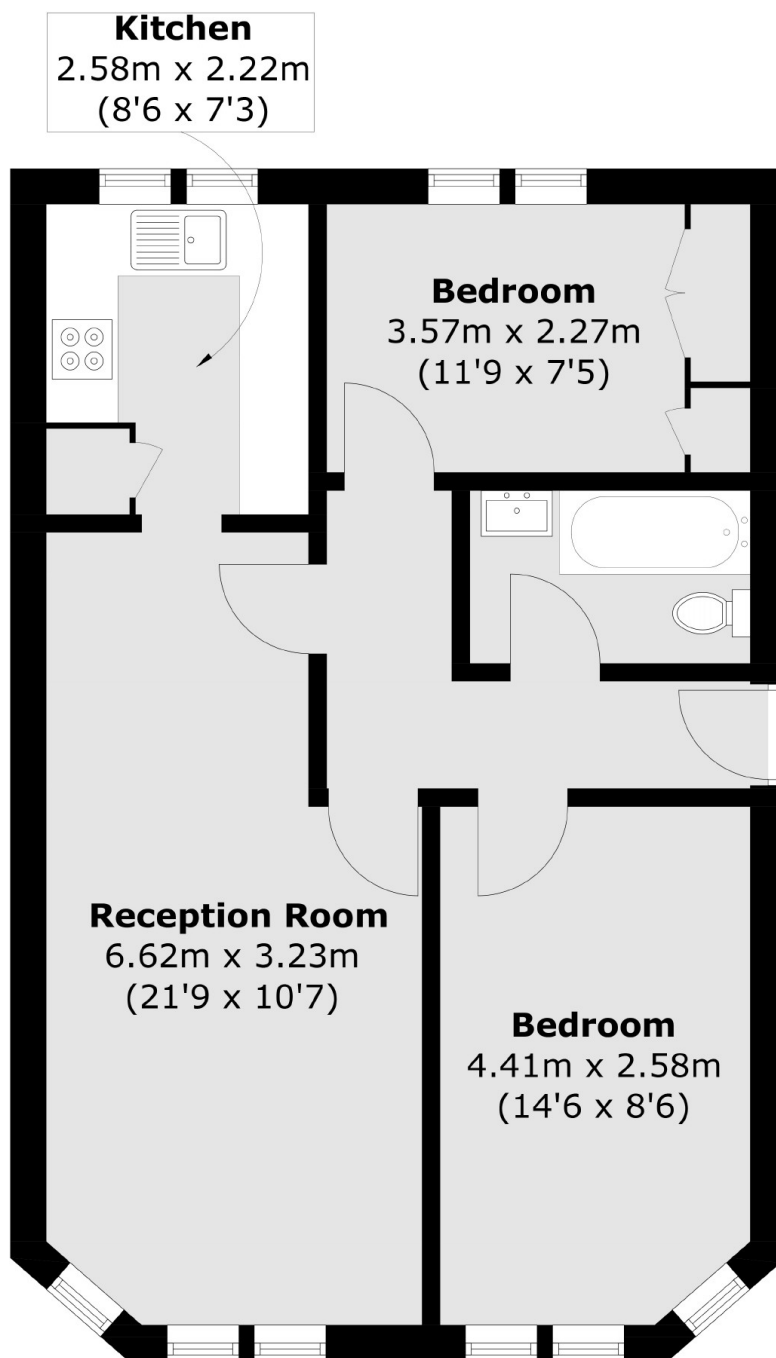
We are pleased to offer this two double bedroom apartment to the market with no onward chain. The property benefits from communal gardens, a long lease and good condition throughout. Perfect for first time buyers and investors alike.

Angelfield is based in a sought after location with easy access to the High Street, local amenities and parks. Both underground and overground stations are nearby with excellent links to Central London and Heathrow Airport.

Features

- Two Double Bedrooms
- First Floor Apartment
- Long Lease
- Communal Gardens
- Close To Amenities
- No Onward Chain

St. Stephens Road, Hounslow, TW3



Total area (approx.): 55.0 sq. m (592.0 sq. ft)