



Moreton Avenue, TW7

£1,995 Per calendar month

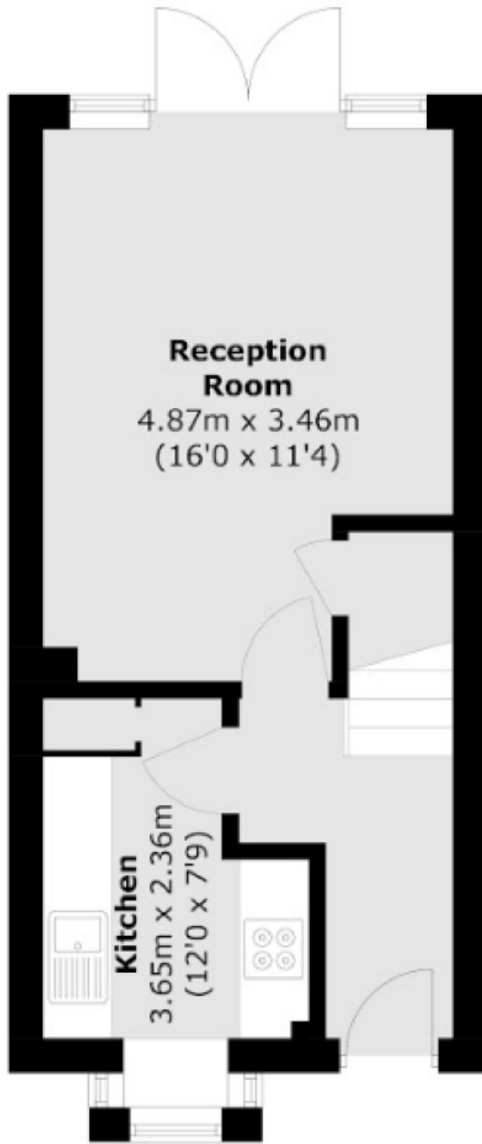
Newly refurbished 2-bed end terrace on desirable road. Bright reception, modern kitchen, large private garden, 2 double beds, stunning bathroom, off-street parking, ample storage. Easy access to transport.

This property is ideally located with access to the local amenities of Isleworth, Chiswick, Ealing, Hounslow, Twickenham and Heathrow with transport links via Osterley and Hounslow East Tube Stations (Piccadilly Line), Isleworth British Rail Station with the A4 in close proximity.

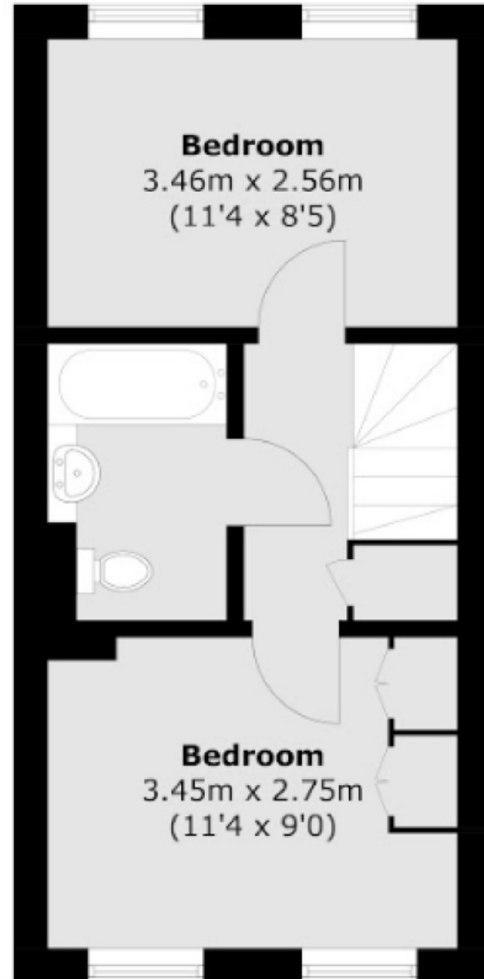
Features

- Two Double Bedrooms
- One Bathroom
- Bright Reception
- Separate Kitchen
- Large Garden
- Off-Street Parking

Moreton Avenue, Isleworth, TW7



Ground Floor



First Floor

Total area (approx.): 57.0 sq. m (613.5 sq. ft)