



## Smithy Lane, TW3

£435,000

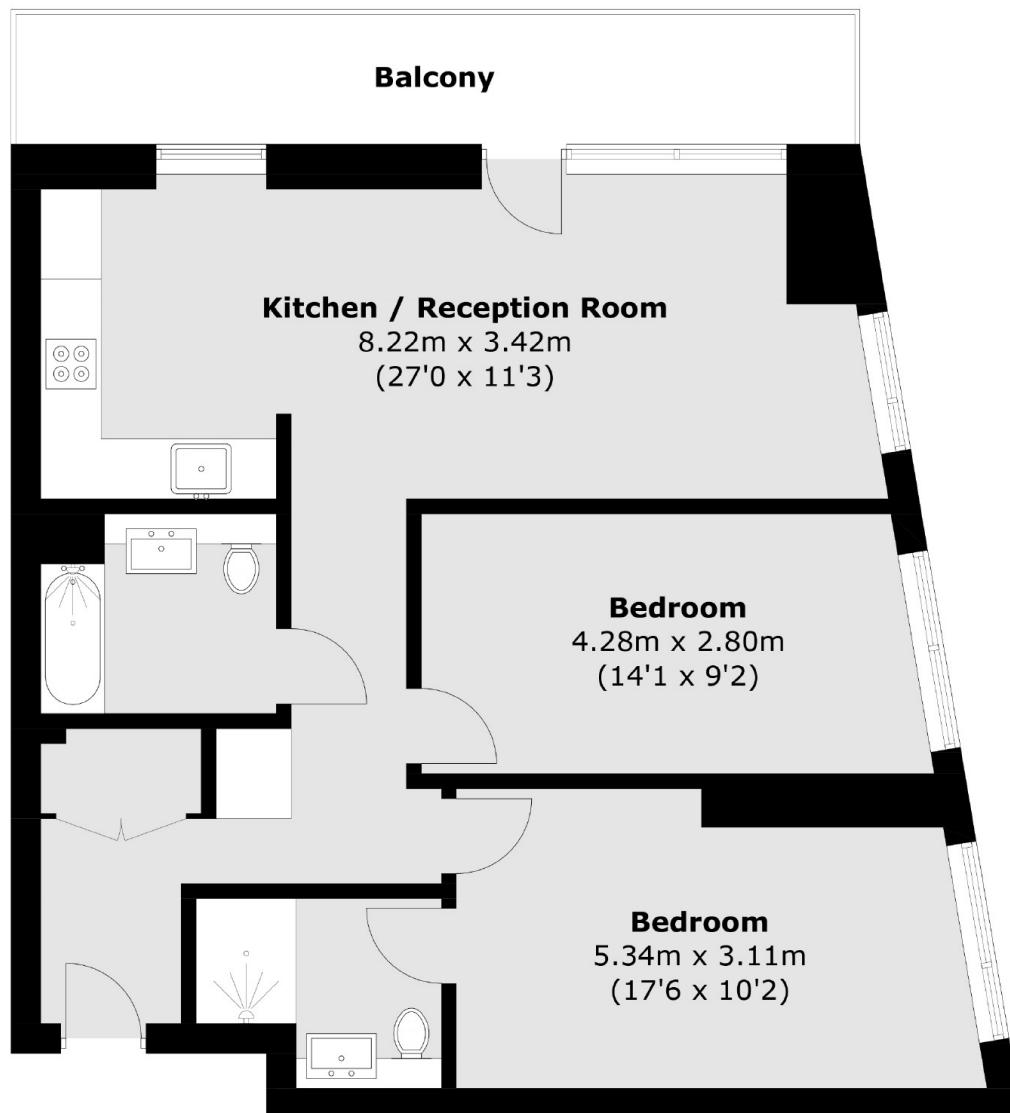
This modern first floor apartment is an ideal purchase for a first time buyer, investor or young family, offering two double bedrooms, two bathrooms, large open-plan kitchen/living space and generous balcony. Measuring more than 830 square feet of living space, further benefits include a secure parking space which was purchased privately by the current owners.

Hooper House is nestled in a sought after and central location in Hounslow Town Centre, surrounded by an array of shops, bars, restaurants and cinema complex. Excellent transport links are located nearby

### Features

- First Floor Apartment
- Two Double Bedrooms
- Two Bathrooms
- Secure Parking Space
- Balcony & Communal Gardens
- Immaculate Condition

# Smithy Lane, Hounslow, TW3



Total area (approx.): 77.6 sq. m (835.2 sq. ft)  
Balcony: 10.9 sq. m (117.3 sq. ft)