



## Douglas Road, TW3

### £259,000

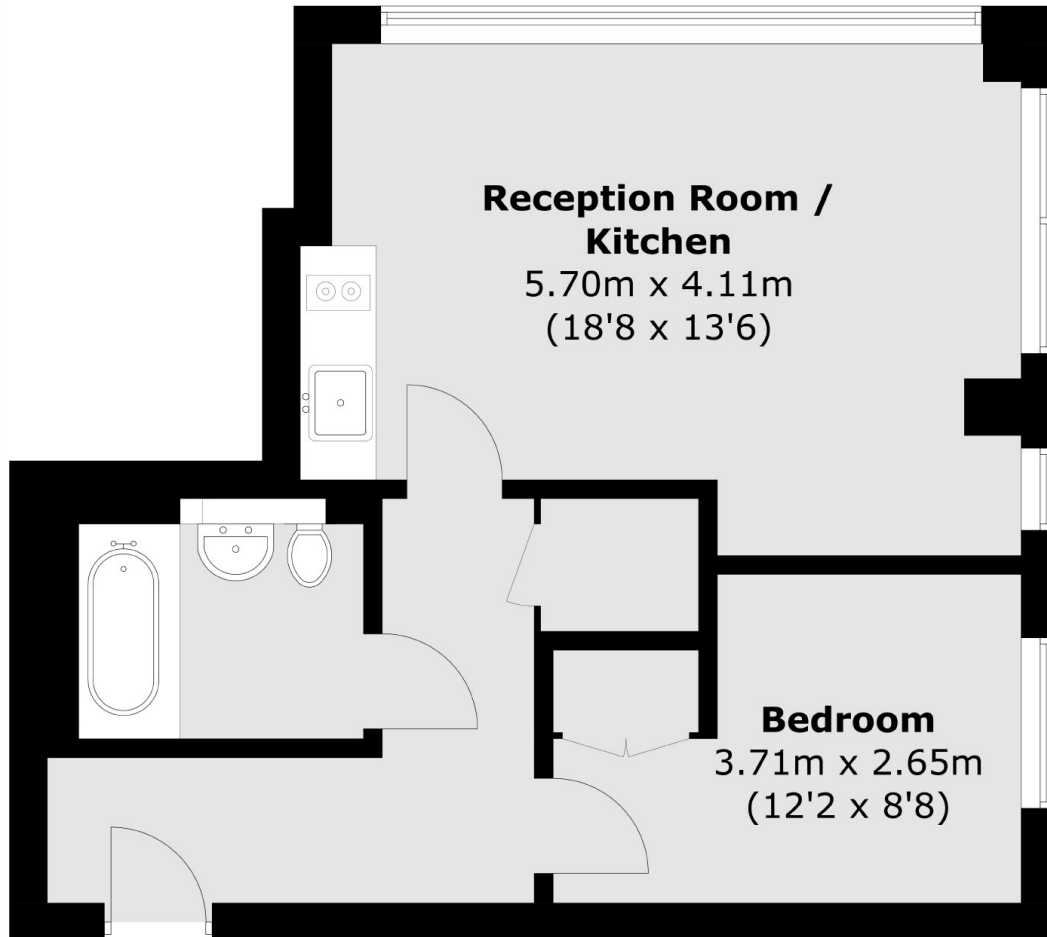
A charming one bedroom apartment offered to the market with no onward chain. The property benefits from a modern finish throughout, an open plan kitchen and living area, as well as gated allocated parking.

The property is located on the door step of Hounslow High Street offering an array of shops and restaurants. Hounslow East Station (Piccadilly) is a short walk with easy access to both Central London and Heathrow Airport.

### Features

- Beautifully Presented
- One Bedroom Apartment
- Allocated Parking
- Ground Floor
- Long Lease
- Close To Amenities

# Douglas Road, Hounslow, TW3



Total area (approx.): 44.4 sq. m (477.9 sq. ft)