



Alderwick Drive, TW3

£695,000

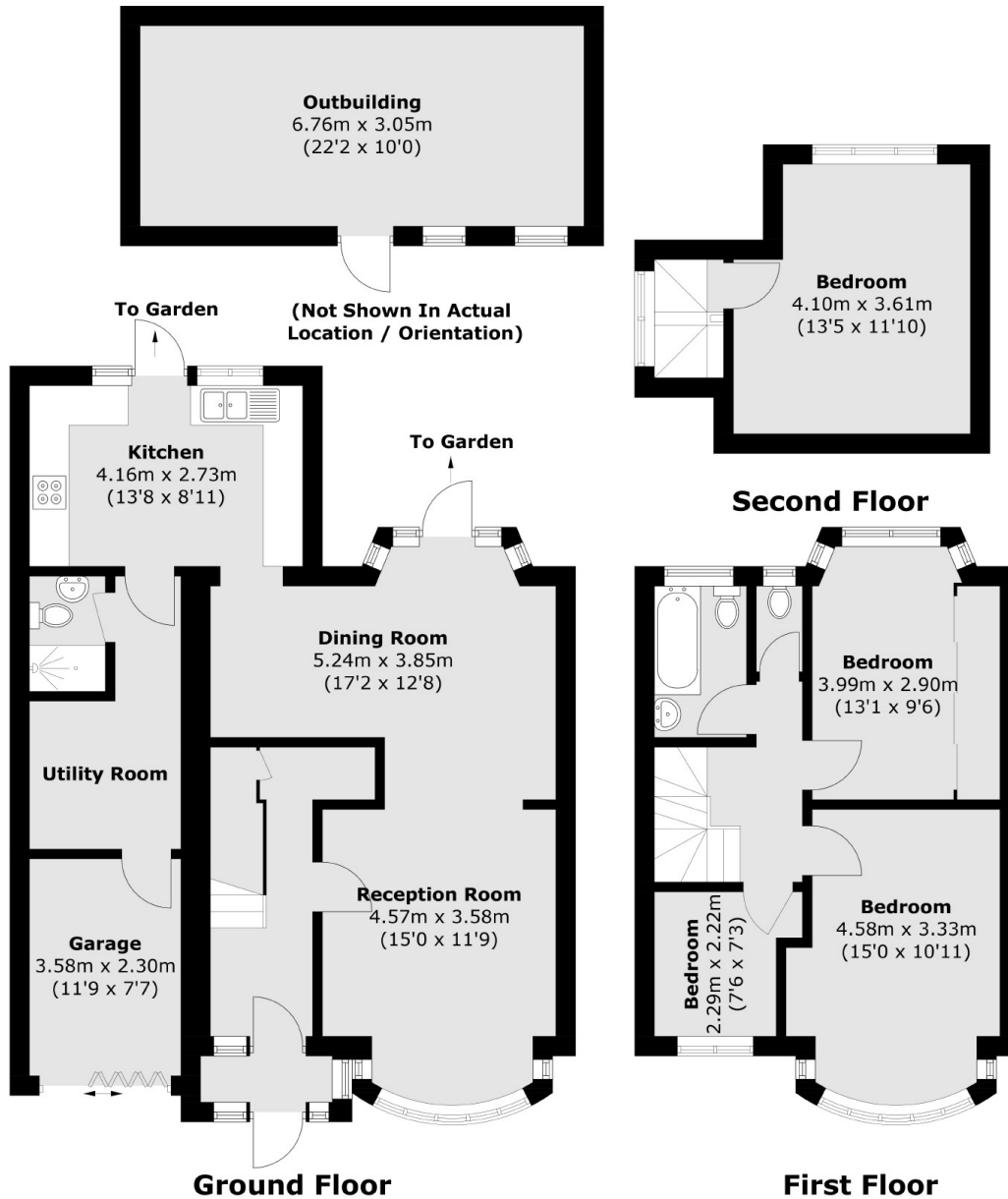
Offered to the market with no onward chain, we are delighted to bring to the market this substantial semi detached four bedroom, two bathroom house, ideal for a family or investor. Benefits include a wide driveway for multiple cars, garage and large outbuilding. There is further scope to extend (STPP)

Alderwick Drive is located on a quiet cul-de-sac centrally positioned with easy access to a vast array of shops and restaurants on the nearby high-street. The bus garage, tube and overground railway stations are within walking distance, as well as local schools and parks.

Features

Semi Detached
Four Bedrooms
Driveway / Garage
Large Outbuilding
Scope to Extend (STPP)
No Chain

Alderwick Drive, Hounslow, TW3



Total area (approx.): 130.4 sq. m (1,403.5 sq. ft)
Outbuilding: 20.7 sq. m (222.8 sq. ft)