



## Prince Regent Road, TW3

### £340,000

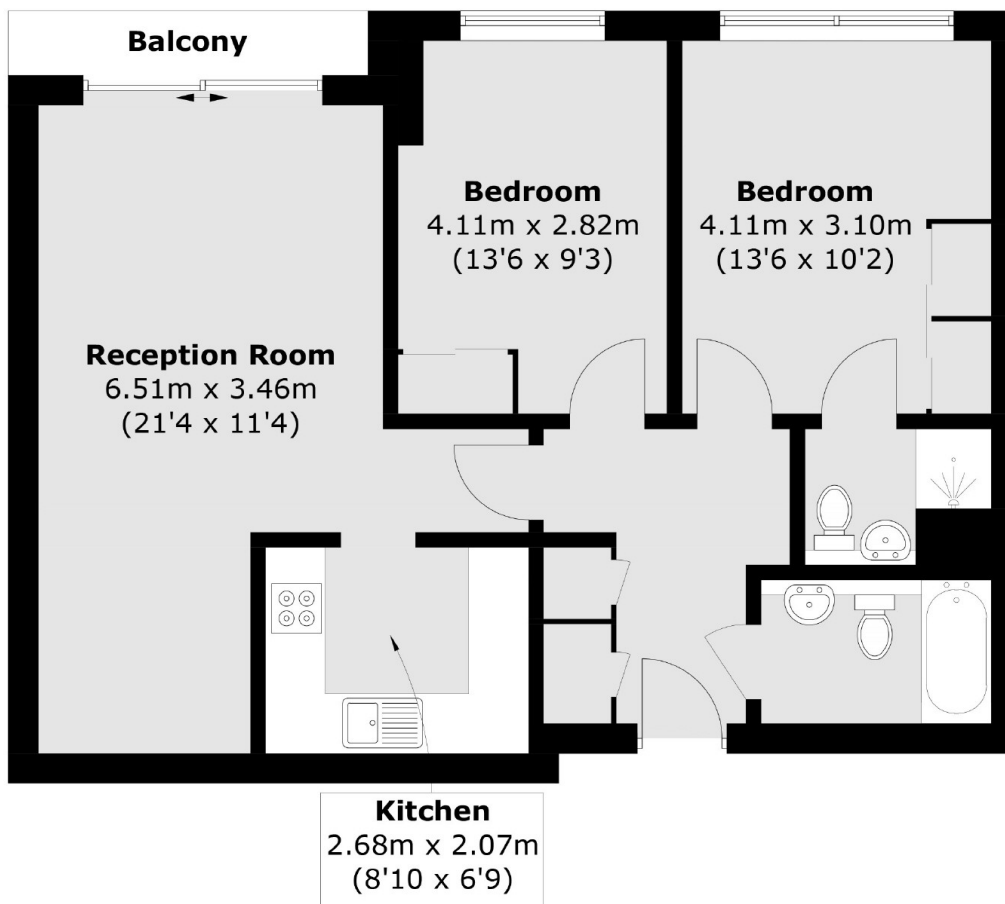
A spacious and modern two double bedroom apartment set within a highly sought after development in the heart of Hounslow. Benefits include concierge, communal lift service and a private balcony offering skyline views of London. Further benefits include allocated secure parking and reception concierge. Sold with no onward chain.

Blenheim Centre is a sought after development in the heart of Hounslow and a short walk to Hounslow East tube station (Piccadilly line). There is new cinema moments away, as well as many amenities nearby offering a variety of shops and restaurants on your doorstep!

### Features

- Two Bedrooms
- Private Balcony
- Long Lease
- Secure Parking
- Concierge
- Close To Amenities

# Prince Regent Road, Hounslow, TW3



Total area (approx.): 65.2 sq. m (701.8 sq. ft)  
Balcony area : 2.3 sq. m (24.7 sq. ft)