



Alderney Avenue, TW5

£1,150,000

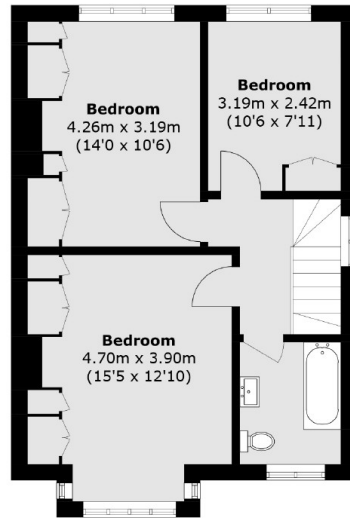
A beautiful semi detached four bedroom property offering almost 1,500 square feet of generous living space. Benefits include a large secluded rear garden backing onto a wonderful open green space. The garage has been converted into a granny-annex providing ground floor living and/or a utility space with shower room. Further benefits include driveway for multiple cars. There is additional scope to extend (STPP)

Ideally situated close to Osterley tube station (Piccadilly line) and within close proximity to excellent local schools, parks and shops. There is easy access to the A4/M4 as well as neighbouring areas of Chiswick, Richmond and Kew.

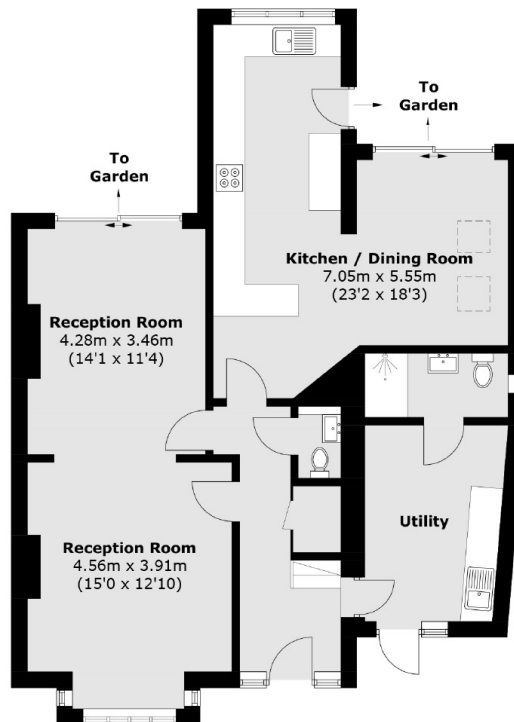
Features

- Semi Detached
- Four Bedroom
- Driveway for Multiple Cars
- Large Garden
- Sought After Location
- Potential To Extend (STPP)

Alderney Avenue, Hounslow, TW5



First Floor



Ground Floor

Total area (approx.): 138.6 sq. m (1,491.8 sq. ft)