



## Witham Road, TW7

£385,000

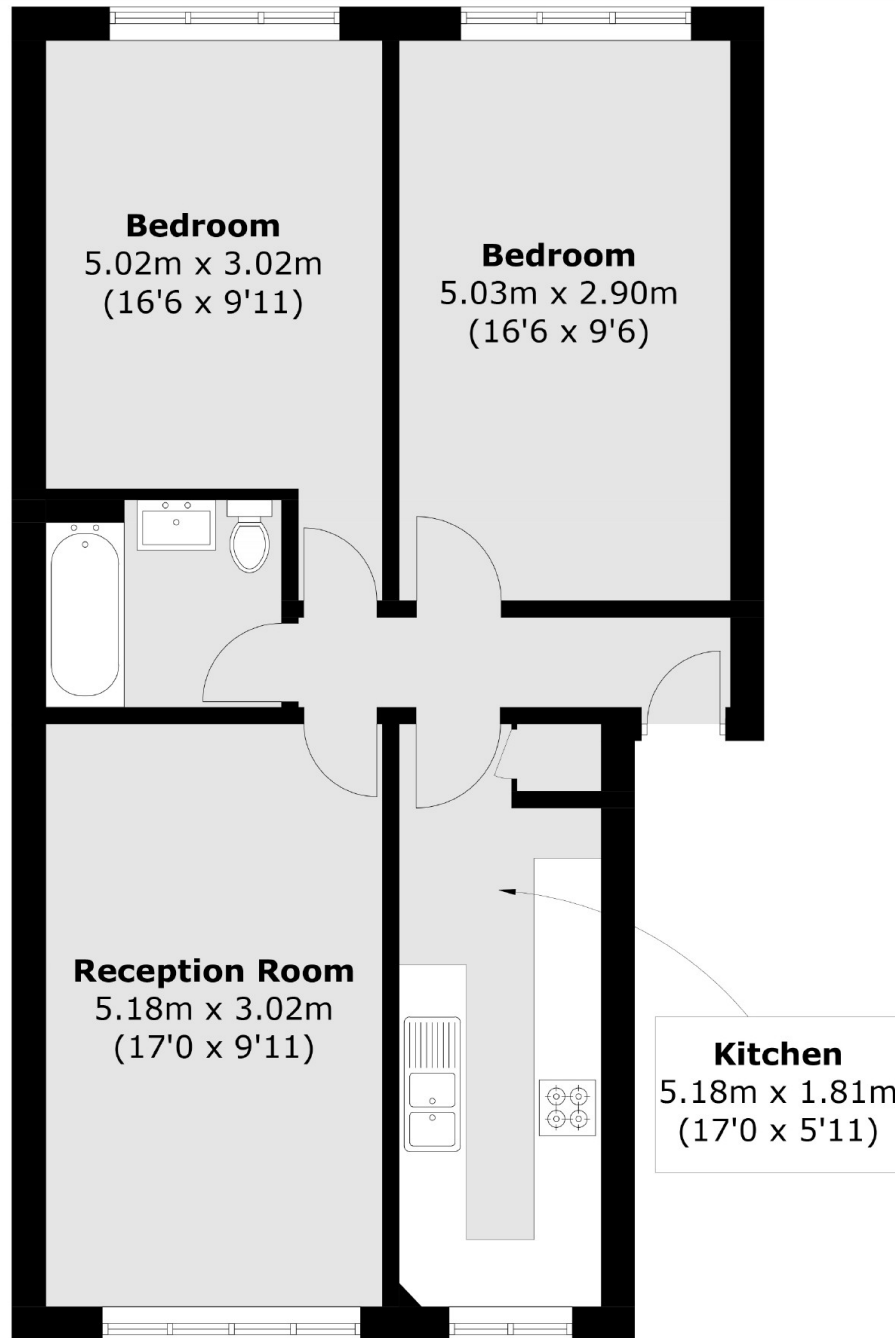
Offered to the market with no onward chain, we are delighted to bring to the market this spacious two double bedroom apartment on the top floor of this sought after purpose built development. The property benefits from loft storage, allocated parking space within a gated car park, long lease and communal gardens including bike shed.

Situated on one of Isleworth's premier roads, this property is superbly located close to Isleworth train station and Osterley tube station as well as local parks and amenities.

### Features

- Top Floor Apartment
- Two Bedrooms
- Separate Kitchen
- Allocated Parking
- Long Lease
- No Chain

# Witham Road, Isleworth, TW7



Total area (approx.): 62.9 sq. m (677.0 sq. ft)