



London Road, TW7

£1,500 Per calendar month

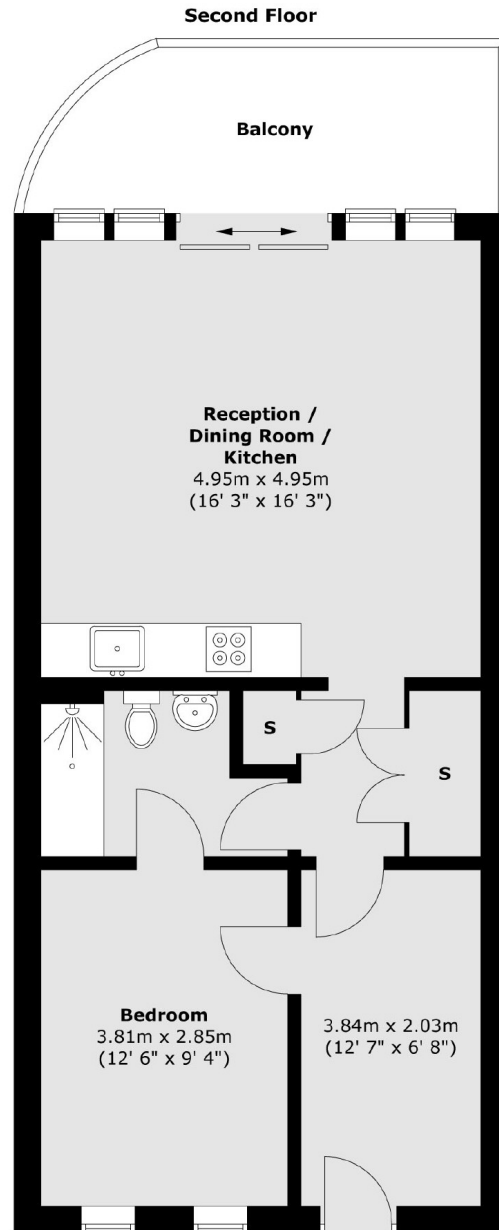
Stunning one-bed apartment in Isleworth's gated development. Spacious with private balcony, allocated parking, and lift service. Perfect for couples seeking elegance and convenience in the heart of Isleworth.

The property is situated on London Road within close proximity to local shops, parks and Isleworth train station with regular services to London Waterloo. The property is also within easy reach to neighbouring areas of Richmond, Twickenham and Chiswick.

Features

- Beautifully Presented
- One Double Bedroom
- Modern Bathroom
- Private Balcony
- Allocated Parking
- Close To Isleworth Station

London Road, Isleworth, TW7



Total area (approx.) : 54.9 sq. m (591 sq. ft)
Total balcony area (approx.) : 9.2 sq. m (99 sq. ft)