

Thornbury Road, TW7

£240,000

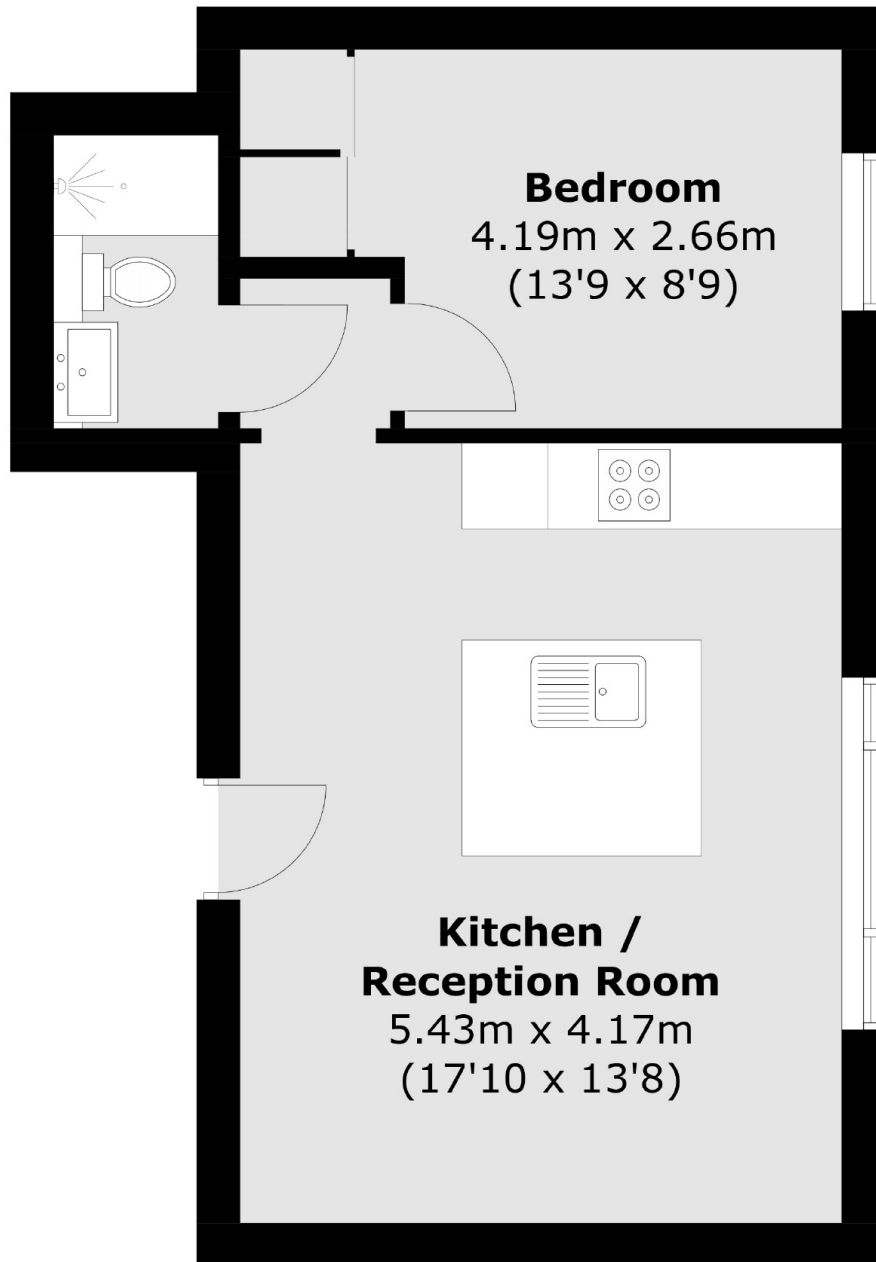
*** OFFERS IN EXCESS OF *** Offered to the market with no onward chain, we are delighted to launch this delightful one double bedroom first floor period conversion apartment. Immaculately presented throughout, the property benefits from high ceilings and unallocated parking

Thornbury Road is ideally located close to an array of amenities including excellent schools, shops and parks. Both Isleworth Mainline and Osterley tube stations are nearby with regular services to London and Heathrow Airport. Neighbouring areas of Richmond, Twickenham and Kew are also within easy reach.

Features

Period Conversion
One Double Bedroom
High Ceiling
Immaculate Throughout
Unallocated Parking
No Chain

Thornbury Road, Isleworth, TW7



Total area (approx.): 37.2 sq. m (400.4 sq. ft)

Dexters

Isleworth
568 London Road
Isleworth
TW7 4EP
Sales
020 8560 1177

Energy Rating: . We aim to make our particulars both accurate and reliable. However they are not guaranteed; nor do they form part of an offer or contract. If you require clarification on any points then please contact us, especially if you're traveling some distance to view. Please note that appliances and heating systems have not been tested and therefore no warranties can be given as to their good working order.

 **RICS** | Regulated
Estate Agent
and Letting Agent

dexters.co.uk