



Wood Lane, TW7

£345,000

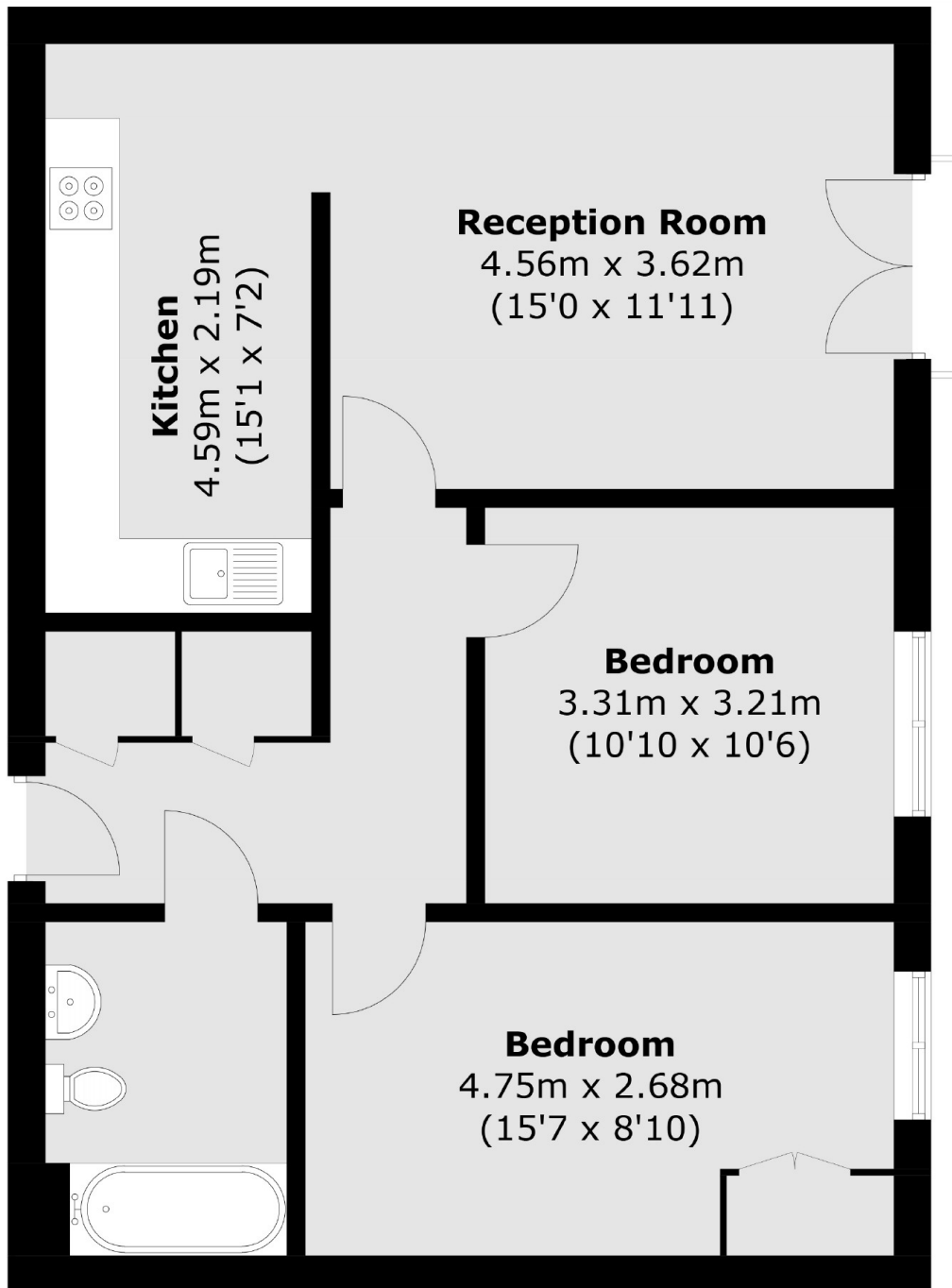
We are delighted to bring to the market this bright and spacious two double bedroom apartment. Sold with no onward chain, further benefits include lift access, stunning views with communal gardens and residents parking.

Wood Lane is a private gated development, with great links to Central London via car, tube and train. Isleworth and Syon Lane Train stations are a short walk away.

Features

- Two Double Bedrooms
- Lift Access
- Residents Parking
- Stunning Viewings
- Communal Gardens
- No Chain

Wood Lane, Isleworth, TW7



Total area (approx.): 67.5 sq. m (726.6 sq. ft)