



Clarke Avenue, TW3

£299,950

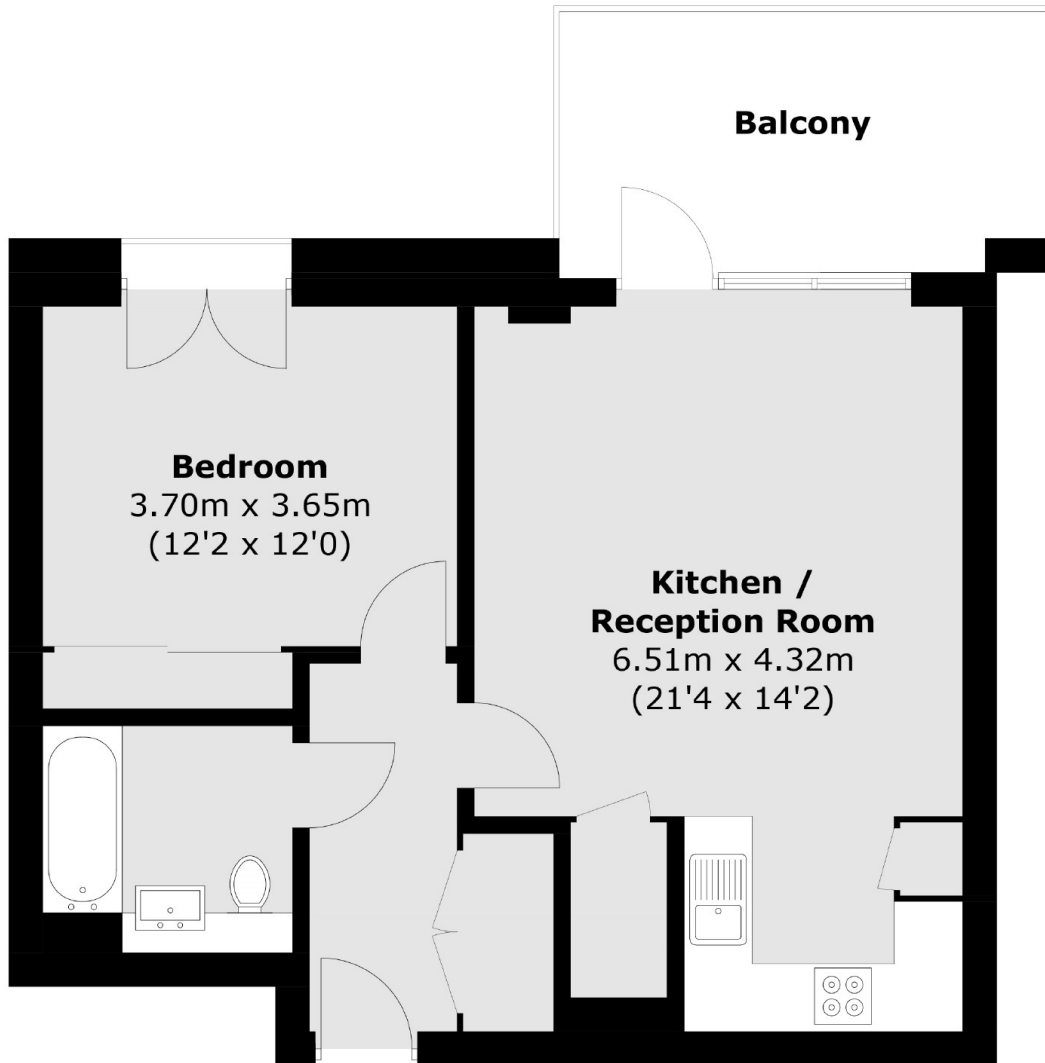
A superbly finished one double bedroom apartment with over 545 sq ft of living space. The property is situated on the third floor within a fantastic well-maintained development, benefitting from a spacious kitchen/reception/dining area, large private balcony and communal lift service.

Located on the doorstep of Lampton Park, this property is moments to Hounslow Central Station (Piccadilly line) with regular services to Heathrow Airport and Central London. Hounslow High Street is a short walk with a variety of shops and restaurants as well as a cinema

Features

- Bright And Spacious
- One Double Bedroom
- Separate Kitchen
- Large Balcony
- Long Lease
- Close To Transport

Clarke Avenue, Hounslow, TW3



Total area (approx.): 50.9 sq. m (547.9 sq. ft)
Balcony: 9.8 sq. m (105.5 sq. ft)